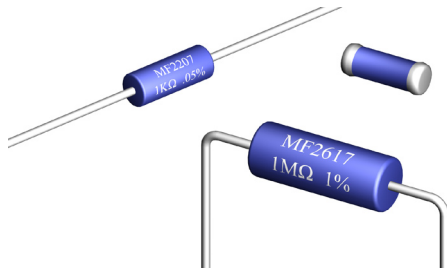


# MF2000 Series

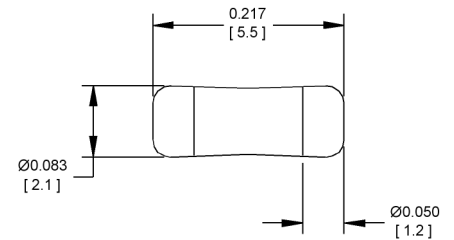
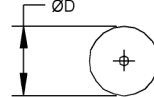
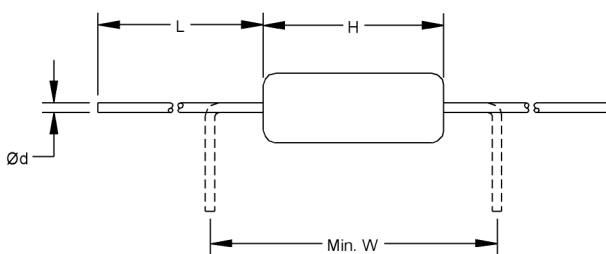
Precision / Metal Film Resistors



- Resistances from 1 to 10MOhms
- Power Rating 0.4 to 0.65Watts
- Resistance Tolerances to  $\pm 0.05\%$
- TCR's to  $\pm 3\text{ppm/K}$
- Very Low Inductance
- Matched Sets Available
- E192 Values in Stock

## SPECIFICATIONS

Type	Power Rating Watts @ 70°C	Resistance Range ( $\Omega$ )	Maximum Voltage	H <sub>(MAX)</sub>	D <sub>(MAX)</sub>	d $\pm 0.002^*$ [ $\pm 0.05\text{mm}$ ]	L <sub>(MIN)</sub>	W <sub>(MIN)</sub>	RN Size
MFM2207	0.40	1 to 5M	300	( See MFM2207 Drawing )					-
MF2207	0.40	1 to 10M	300	0.260 [6.5]	0.100 [2.5]	0.028 [0.7]	1.20 [30]	0.300 [7.5]	RN55
MF2617	0.65	3 to 10M	500	0.600 [15.2]	0.230 [5.8]	0.032 [0.8]	1.20 [30]	0.690 [17.5]	RN65



MFM2207

Specification	Value
Resistance Range	1 Ohms to 10MOhms
Tolerances	$\pm 0.05\%$ to $\pm 1\%$
Temperature Coefficient	( See Charts )
Temperature Range	-25°C to +125°C ( TC $\geq 25\text{ppm/K}$ ) -10°C to +85°C ( TC $< 25\text{ppm/K}$ )
Insulation Resistance	>10000 MOhms
Climatic Category	55/125/56
Max Soldering Temperature	+260°C / 10s
Voltage Coefficient	< 5ppm/V

# MF2000 Series

Precision / Metal Film Resistors



## SPECIFICATIONS (continued)

### MF2207 TCR / Tolerance / Resistance Chart

TCR ( $\pm$ ppm/K)	Resistances Available at These Tolerances				
	$\pm 0.05\%$	$\pm 0.1\%$	$\pm 0.25\%$	$\pm 0.5\%$	$\pm 1\%$
5	50 - 250K	10 - 500K	10 - 500K	10 - 500K	-
10	50 - 510K	5 - 1M	5 - 1M	5 - 1M	-
15	50 - 510K	5 - 1.5M	5 - 1.5M	5 - 2M	1 - 2M
25	50 - 510K	5 - 1.5M	5 - 3M	2 - 5M	1 - 5M
50	50 - 510K	5 - 2M	3 - 3M	2 - 5M	1 - 5M

### MF2207 TCR / Tolerance / Resistance Chart

TCR ( $\pm$ ppm/K)	Resistances Available at These Tolerances				
	$\pm 0.05\%$	$\pm 0.1\%$	$\pm 0.25\%$	$\pm 0.5\%$	$\pm 1\%$
3	50 - 120K	30 - 200K	30 - 200K	30 - 200K	-
5	50 - 250K	10 - 500K	10 - 500K	10 - 500K	-
10	50 - 510K	5 - 1M	50 - 1M	50 - 1M	-
15	50 - 510K	5 - 1.5M	5 - 2M	5 - 2M	1 - 2M
25	50 - 510K	5 - 3M	2 - 3M	2 - 5M	1 - 5M
50	50 - 510K	5 - 3M	2 - 3M	2 - 10M	1 - 10M

### MF2617 TCR / Tolerance / Resistance Chart

TCR ( $\pm$ ppm/K)	Resistances Available at These Tolerances				
	$\pm 0.05\%$	$\pm 0.1\%$	$\pm 0.25\%$	$\pm 0.5\%$	$\pm 1\%$
10	240 - 250K	100 - 250K	50 - 250K	20 - 510K	20 - 510K
15	240 - 250K	100 - 250K	50 - 250K	20 - 510K	20 - 510K
25	240 - 510K	100 - 1M	50 - 2M	20 - 5M	10 - 5M
50	100 - 510K	50 - 10M	10 - 10M	5 - 10M	3 - 10M

## Ordering Information

Part Number - Resistance - Tolerance - TCR  
 Example: MF2207 1.1 kOhm 0.05% 5ppm  
 ( Note: If no TCR is specified / the highest value will be supplied )

