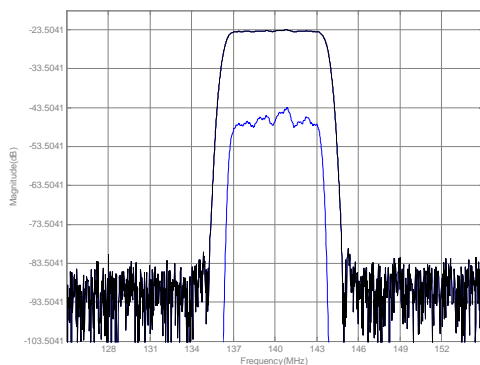




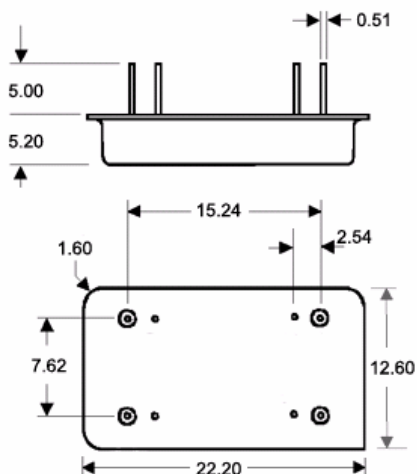
## LBT14020 SAW Filter Electrical Characteristic

<i>Specifications</i>				
Parameter	Unit	Minimum	Typical	Maximum
<b>Center Frequency</b>	MHz	139.80	140	140.20
<b>Insertion Loss</b>	dB	-	23.5	27
<b>1 dB Bandwidth</b>	MHz	6.5	6.57	-
<b>3 dB Bandwidth</b>	MHz	7	7.20	-
<b>40 dB Bandwidth</b>	MHz	-	9.10	9.20
<b>50 dB Bandwidth</b>	MHz	-	9.36	-
<b>Passband Variation</b>	dB	-	0.45	0.7
<b>Phase Linearity</b>	degrees	-	3.2	6
<b>Group Delay Variation</b>	nsec	-	60	130
<b>Absolute Delay</b>	usec	-	2.59	-
<b>Ultimate Rejection</b>	dB	50	60	-
<b>Substrate Material</b>		LiTaO3		
<b>Ambient Temperature</b>	°C	25		
<b>Package Size</b>		DIP2212 (22.1x12.7x5.2mm <sup>3</sup> )		

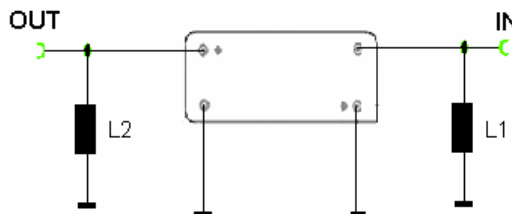
### *Typical Performance*



### *Package Outline*



### *Matching Configuration*



**L1=22nH      L2=120nH**  
**Source/Load Impedance=50 ohm**

*Notes - Component values may change depending on board layout*