

QUADRATURE HYBRID MODEL SLQ-KH1

OCTAVE BANDWIDTH

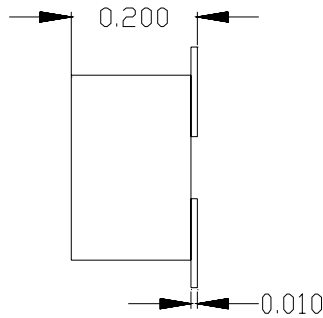
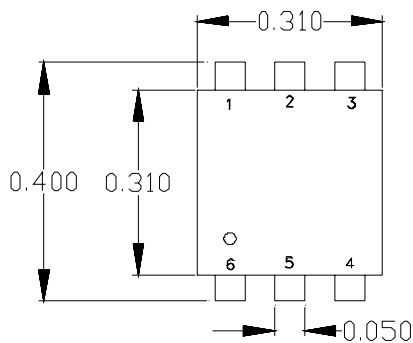
30 - 60 MHz

SPECIFICATIONS

Operating Frequency:	30 - 60 MHz	Phase Unbalance:	1.0° (Typ) / 3.0° (Max)
Insertion Loss:	0.3 dB (Typ) / 0.6 dB (Max)	VSWR :	1.1:1 (Max)
Isolation:	25 dB (Typ) / 20 dB (Min)	Power Rating:	1 Watt (Max)
Amplitude Unbalance:	0.4 dB (Typ) / 0.75 dB (Max)	Impedance:	50 Ohms (Nom)
		Operating Temp. Range:	-20° to +70°C



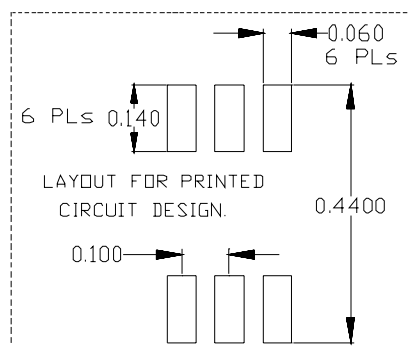
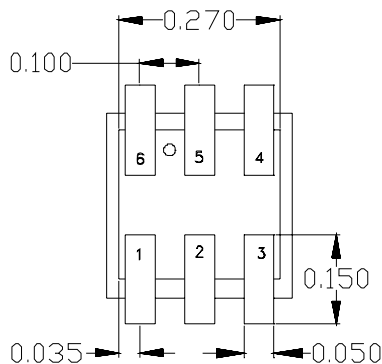
MECHANICAL OUTLINE: 159



PIN-OUT	
Input	6
+90° Output	1
0° Output	2
Isolated*	5
Ground**	3,4

* Terminate Isolated port with 50 Ohms
** Ground Externally

Note:
- Dimensions are in inches
- Tolerance: ± 0.15 inches



QUADRATURE HYBRID MODEL SLQ-KH1

OCTAVE BANDWIDTH

30 - 60 MHz

PERFORMANCE PLOTS

