



QEFS21M4B15

SMD Monolithic Crystal Filter – 21.400 MHz
Specification (Rev-B)

▣ Electrical Characteristics	P01
▣ Environmental Specifications	P01
▣ Mechanical Characteristics	P01
▣ Test Circuit	P02
▣ Marking	P02
▣ Reflow Soldering Profile	P02
▣ Reel	P03

QEFS45M0B15

SMD Monolithic Crystal Filter – 45.000 MHz
Specification (Rev-B)

November 5th , 2005

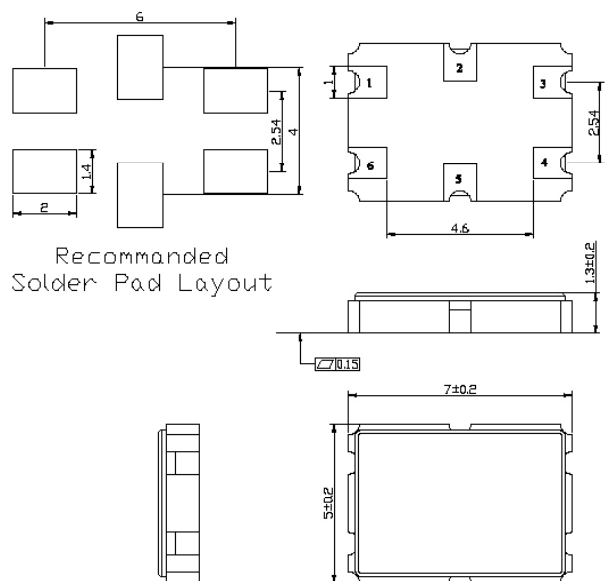
Electrical Characteristics

Electrical Parameters	Unit	Minimum	Typical	Maximum	Test conditions
Nominal Frequency	MHz		45.000		
Insertion Loss	dB			3	
Pass Band at 3.0dB	KHz	±7.5			
Ripple in pass band	dB			1	
Stop Band attenuation at 25 dB	KHz			±22	
Guaranteed attenuation At fo -910 KHz	dB	80	-	-	
Spurious Response	dB	40			
Terminating Impedance	KΩ//pF		800±5% // 1.7±0.2	-	
Number of Poles			4 Single SMD Package		

Environmental Specifications

Electrical Parameters	Unit	Minimum	Typical	Maximum
Operating Temperature	°C	-20		+75

Mechanical Characteristics



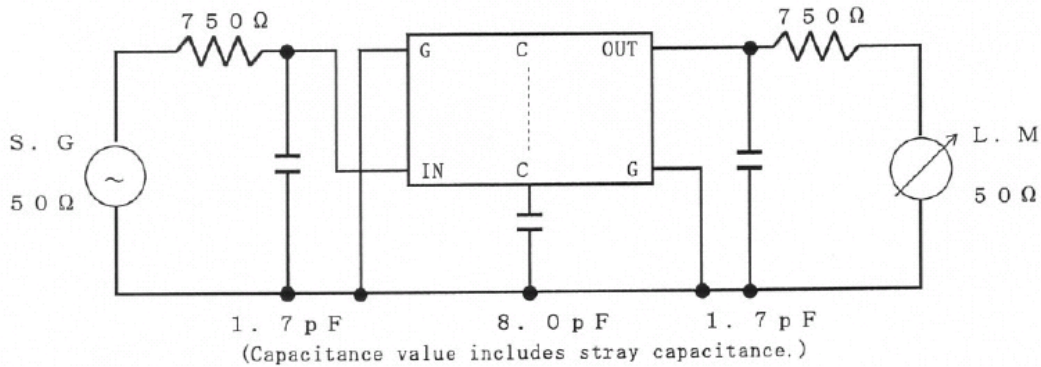
Pin Connections	
# 1	In
# 2	Coupling Capacitance
# 3	Gnd
# 4	Out
# 5	Coupling Capacitance
# 6	Gnd

QEFS45M0B15

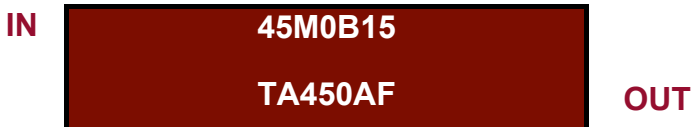
SMD Monolithic Crystal Filter – 45.000 MHz
Specification (Rev-B)

November 5th , 2005

Test Circuit 4 Poles Mono

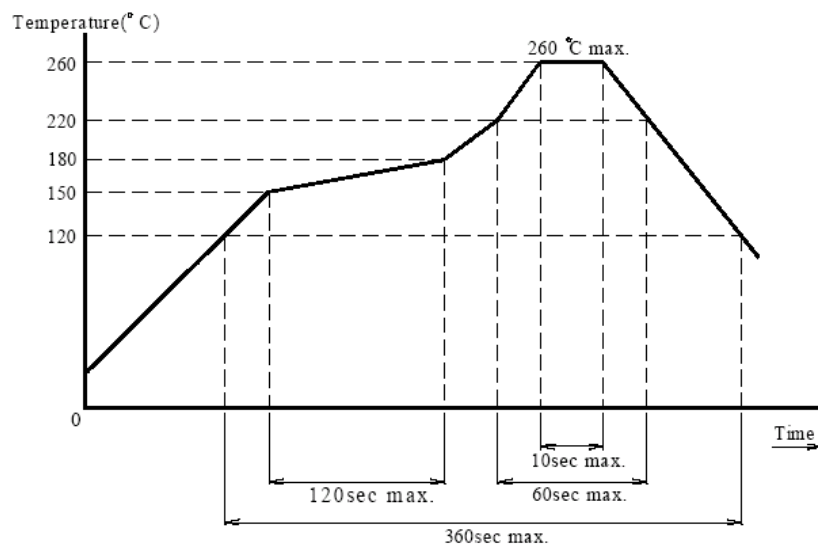


Marking



- 45M0B15: Temex P/N
- TA: Temex name
- 0450: Date code (YYWW)
- AF : Manufacturing Code

Reflow Soldering Profile

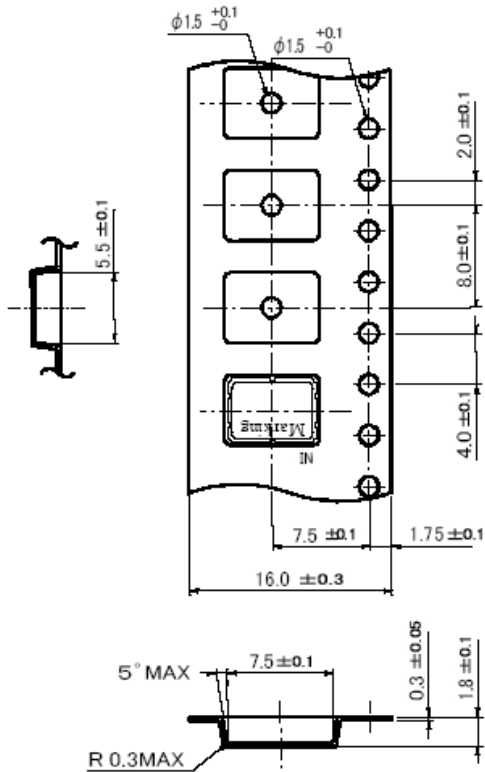


QEFS45M0B15

SMD Monolithic Crystal Filter – 45.000 MHz
 Specification (Rev-B)

November 5th , 2005

Tape & Reel



← Drawing Out Direction.

