



MBR3035PT THRU MBR30100PT

30.0 AMPS. Schottky Barrier Rectifiers



Voltage Range
35 to 100 Volts
Current
30.0 Amperes

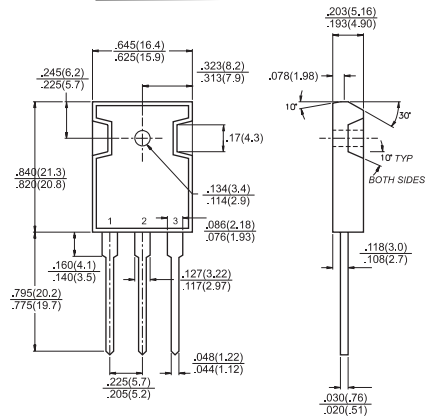
Features

- ✦ Plastic material used carries Underwriters Laboratory Classifications 94V-0
- ✦ Metal silicon junction, majority carrier conduction
- ✦ Low power loss, high efficiency
- ✦ High current capability, low forward voltage drop
- ✦ High surge capability
- ✦ For use in low voltage, high frequency inverters, free wheeling, and polarity protection applications
- ✦ Guardring for overvoltage protection
- ✦ High temperature soldering guaranteed: 260°C/10 seconds, 0.17" (4.3mm) from case

Mechanical Data

- ✦ Cases: JEDEC TO-3P/TO-247AD molded plastic body
- ✦ Terminals: Leads solderable per MIL-STD-750, Method 2026
- ✦ Polarity: As marked
- ✦ Mounting position: Any
- ✦ Mounting torque: 10 in. - lbs. max
- ✦ Weight: 0.2 ounce, 5.6 grams

TO-3P/TO-247AD



Dimensions in inches and (millimeters)

Maximum Ratings and Electrical Characteristics

Rating at 25°C ambient temperature unless otherwise specified.

Single phase, half wave, 60 Hz, resistive or inductive load.

For capacitive load, derate current by 20%

Type Number	Symbol	MBR 3035 PT	MBR 3045 PT	MBR 3050 PT	MBR 3060 PT	MBR 3090 PT	MBR 30100 PT	Units	
Maximum Recurrent Peak Reverse Voltage	V_{RRM}	35	45	50	60	90	100	V	
Maximum RMS Voltage	V_{RMS}	24	31	35	42	63	70	V	
Maximum DC Blocking Voltage	V_{DC}	35	45	50	60	90	100	V	
Maximum Average Forward Rectified Current (SEE FIG. 1)	$I_{(AV)}$	30						A	
Peak Repetitive Forward Current (Rated V_R , Square Wave, 20KHz) at $T_C=105^\circ C$	I_{FRM}	30.0						A	
Peak Forward Surge Current, 8.3 ms Single Half Sine-wave Superimposed on Rated Load (JEDEC method)	I_{FSM}	250						A	
Peak Repetitive Reverse Surge Current (Note 2)	I_{RRM}	2.0		1.0				A	
Maximum Instantaneous Forward Voltage at (Note 1) $I_F=15A, T_C=25^\circ C$ $I_F=15A, T_C=125^\circ C$ $I_F=30A, T_C=25^\circ C$ $I_F=30A, T_C=125^\circ C$	V_F	-	0.60	0.76	0.72	0.75	0.65	0.85	V
Maximum Instantaneous Reverse Current @ $T_C=25^\circ C$ at Rated DC Blocking Voltage Per Leg (Note 2) @ $T_C=125^\circ C$	I_R	1.0		60.0			5.0	100.0	mA mA
Voltage Rate of Change at (Rated V_R)	dV/dt	10,000			1,000			V/ μ S	
Maximum Thermal Resistance Per Leg (Note 3)	$R_{\theta JC}$	1.4						$^\circ C/W$	
Operating Junction Temperature Range	T_J	-65 to +150						$^\circ C$	
Storage Temperature Range	T_{STG}	-65 to +175						$^\circ C$	

- Notes:
1. 2.0 μ s Pulse Width, $f=1.0$ KHz
 2. Pulse Test: 300 μ s Pulse Width, 1% Duty Cycle
 3. Thermal Resistance from Junction to case Per Leg

RATINGS AND CHARACTERISTIC CURVES (MBR3035PT THRU MBR30100PT)

FIG.1- FORWARD CURRENT DERATING CURVE

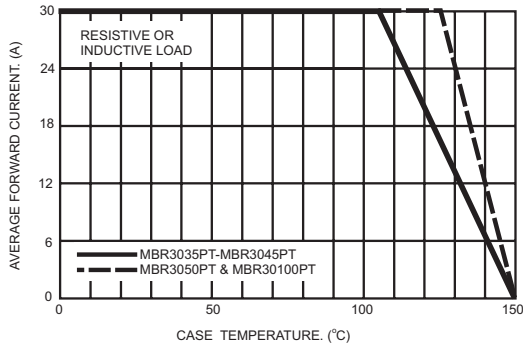


FIG.2- MAXIMUM NON-REPETITIVE FORWARD SURGE CURRENT PER LEG

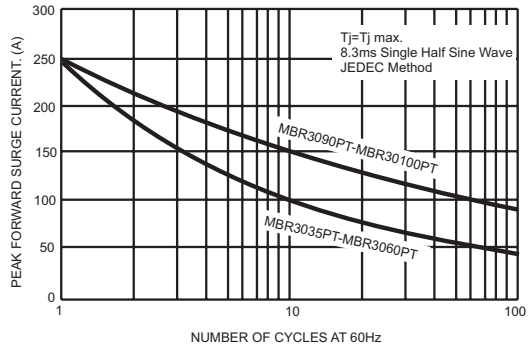


FIG.3- TYPICAL INSTANTANEOUS FORWARD CHARACTERISTICS PER LEG

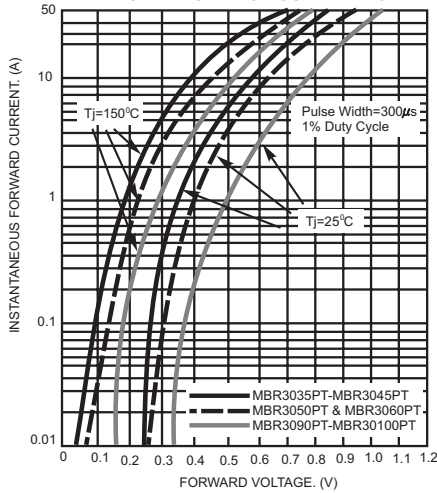


FIG.4- TYPICAL REVERSE CHARACTERISTICS PER LEG

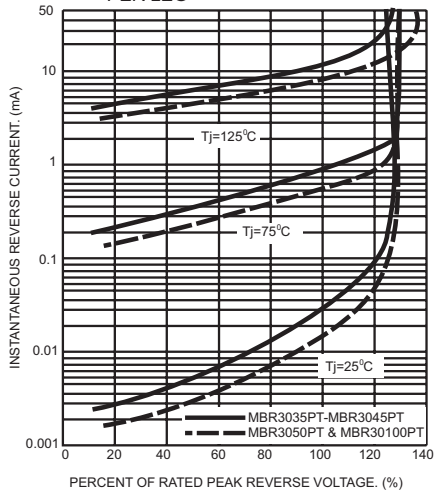


FIG.5- TYPICAL JUNCTION CAPACITANCE PER LEG

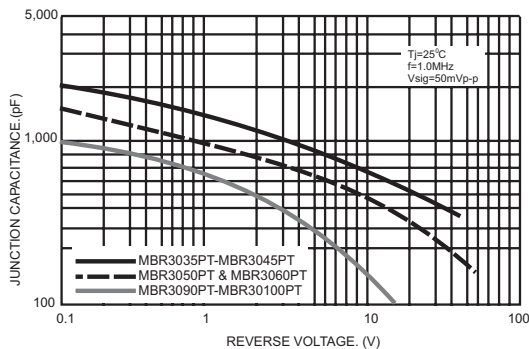


FIG.6- TYPICAL TRANSIENT THERMAL IMPEDANCE PER LEG

