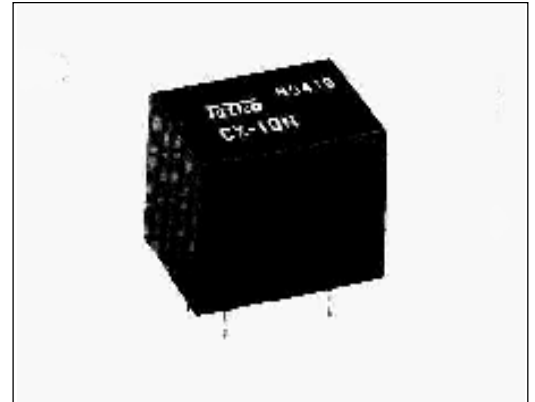


■ Features

- Quiet (UCX: 48dB; CX 55dB).
Appropriate for intermittent windshield wipers and other.
- Low power consumption
- Pin-out compatible with other commonly used automotive relays
- By Taiko



■ Coil Rating (@ 20 C)

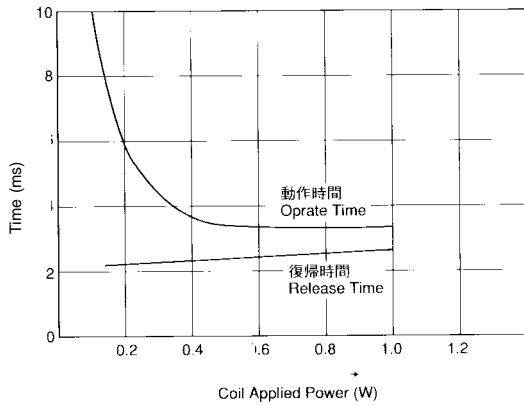
Part Number	Rated Voltage	Coil Resistance +/- 10%	Pull-in Voltage	Drop-out Voltage	Rated Power	Sound Pressure
CX-10N	12VDC	500	7.5V	1V	0.29W	55dB
UCX-10N	12VDC	500	7.5V	1V	0.29W	45dB

■ Specifications

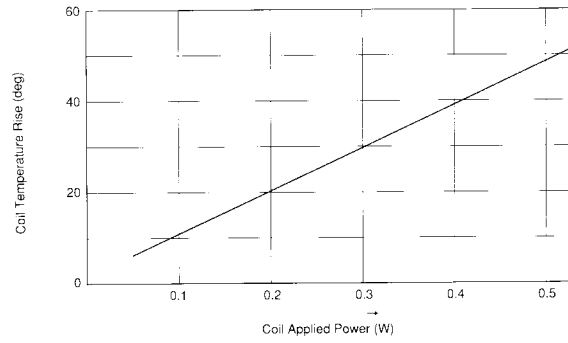
Contact Arrangement		1 Form C (1C)
Contact Material		AgCuNi
Rated Load		5A 14VDC (Motor Load)
Contact Resistance		Max. 30 Ohm (@ 6VDC 1A voltage drop method)
Max. Switching Current		10A
Max. Carrying Current		20A for 10 minutes @ 20 C
Dielectric Strength		1,500 VAC for 1 min. between Coil & Contact 1,000 VAC for 1 min. between open Contacts
Insulation Resistance		Min. 1,000MOhm (@500VDC)
Operate Time		Max. 10ms (@ rated voltage)
Release Time		Max. 10ms (@ rated voltage)
Shock	Fales Operation	Min. 20G (Shock wave 11ms)
	Endurance	Min. 100G (Shock wave 11ms)
Vibration	False Operation	10-55Hz (Double Amplitude 1.5mm)
	Endurance	10-55Hz (Double Amplitude 1.5mm)
Mechanical Life		50 x 10 ⁶ Operations (@ 300 times min.)
Electrical Life		14VDC 5A Motor Load 0.3 ⁶ x 10 ⁶ Operations (On: 1 sec ; Off: 3 sec)
Ambient Temperature		-40° C to +85 °C
Weight		Approx. 8.3g

■ Characteristics

Time Characteristics



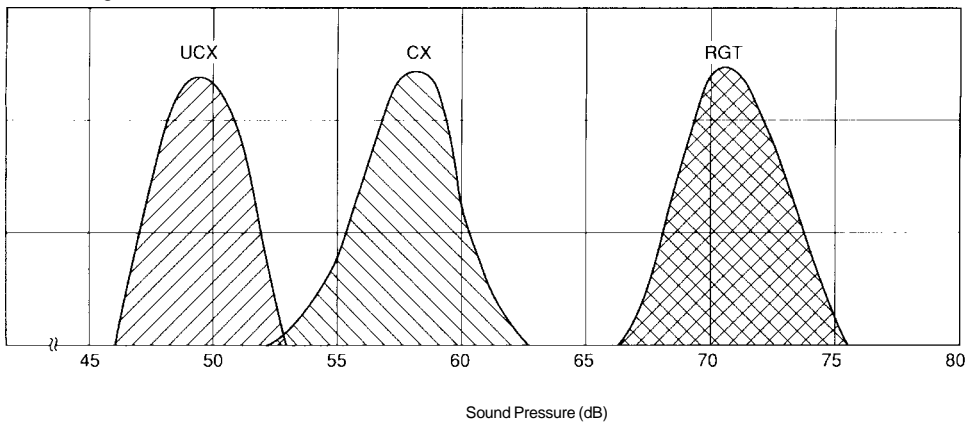
Coil Temperature Rise



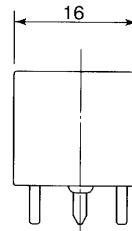
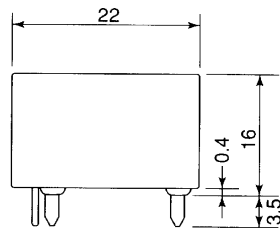
Distribution of Sound Pressure

Applied Voltage & Operation Speed: DC12V 10(pps)

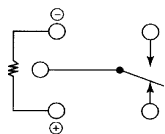
Measuring Distance: 50mm Above Cover



■ Dimensions



Wiring Diagrams



PC Board Pin Layout

