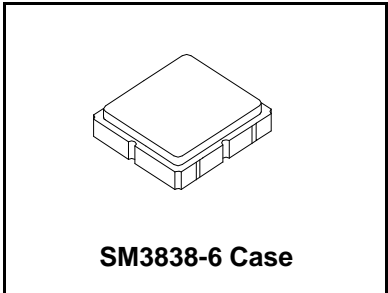




RF1353D

**345.00 MHz
SAW Filter**



- **Designed for 345 MHz Wireless Applications**
- **Advanced (Lithium Tantalate) LiTaO3 design for low Insertion Loss**
- **Designed for match to 50 ohms, no external LC required**
- **Hermetically sealed Surface Mount package**
- **Complies with Directive 2002/95/EC (RoHS)**

Absolute Maximum Ratings

Rating	Value	Units
Maximum Input Power	+10	dBm
DC Voltage Between Terminals	30	VDC
Case Temperature	-40 to +85	°C

Electrical Characteristics

Characteristic	Sym	Notes	Minimum	Typical	Maximum	Units
Nominal Operating Frequency	f _C			345		MHz
Passband	Insertion Loss	IL			4.5	dB
	3.0 dB Bandwidth		F _c ±70	F _c ±430	F _c ±1100	kHz
Rejection	F _c -10.7 MHz		15			dB
	F _c -21.4 MHz		40			dB
Matching	Untuned response			50		Ω
Ambient Temperature	Operating Range		-10		70	°C
Footprint Size: 5.0 X 5.0	SM3838-6					
Lid Symbolization (YY=Year, WW=week, S=shift)	RFM, 444, YYWWS					

Electrical Connections

Connection	Terminals
RF Input	2
RFOutput	6
Case Ground	All Others



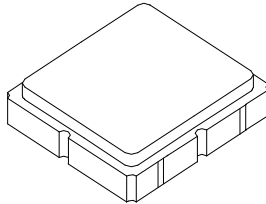
CAUTION: Electrostatic Sensitive Device. Observe precautions for handling.

Notes:

- 1.) All specifications apply over the operating temperature range with filter soldered to the specified demonstration board unless noted otherwise.
- 2.) Ultimate rejection is dependent on PCB layout.
- 3.) Specifications subject to change without notice.
- 4.) Electrostatic Sensitive Device. Observe precautions for handling.
- 5.) US and international patents may apply.
- 6.) RFM, RFM logo, and RF Monolithics, Inc. are registered trademarks of RF Monolithics, Inc.

SM3838-6 Case

6-Terminal Ceramic Surface-Mount Case 3.8 X 3.8 mm Nominal Footprint



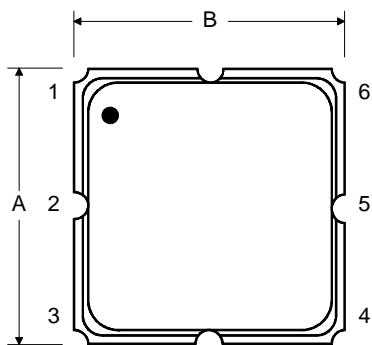
Case Dimensions

Dimension	mm			Inches		
	Min	Nom	Max	Min	Nom	Max
A		3.8			0.15	
B		3.8			0.15	
C		1.25			0.05	
D		1.0			0.04	
E		3.6			0.14	
G		1.0			0.04	
H		2.0			0.08	
I		0.6			0.02	
J		1.8			0.07	

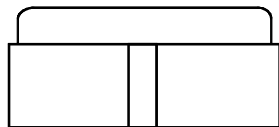
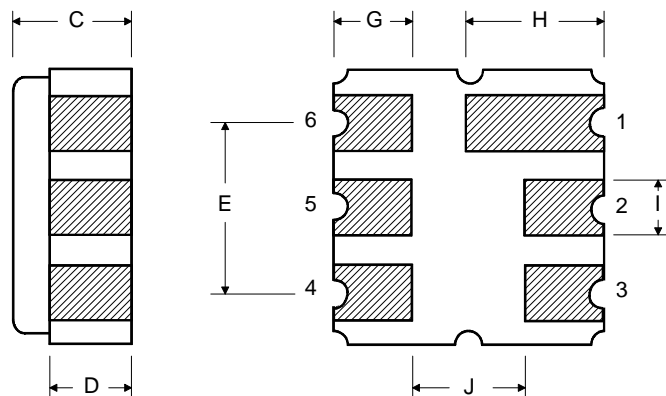
Electrical Connections

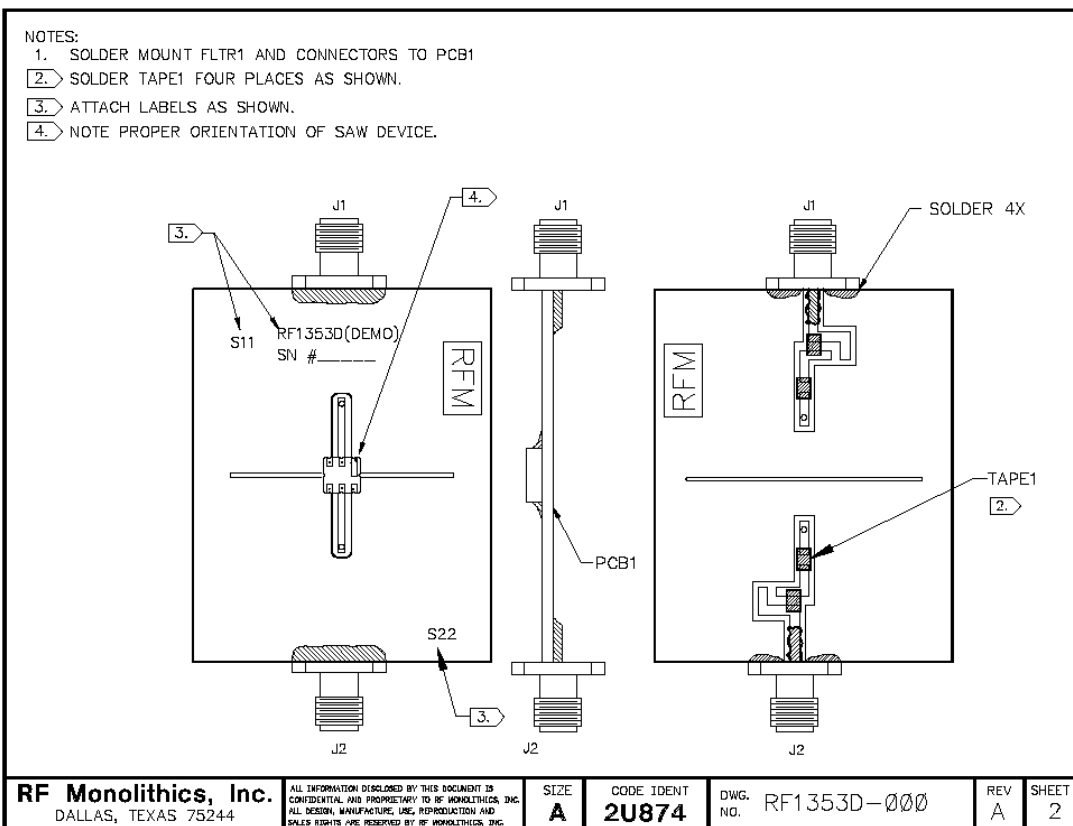
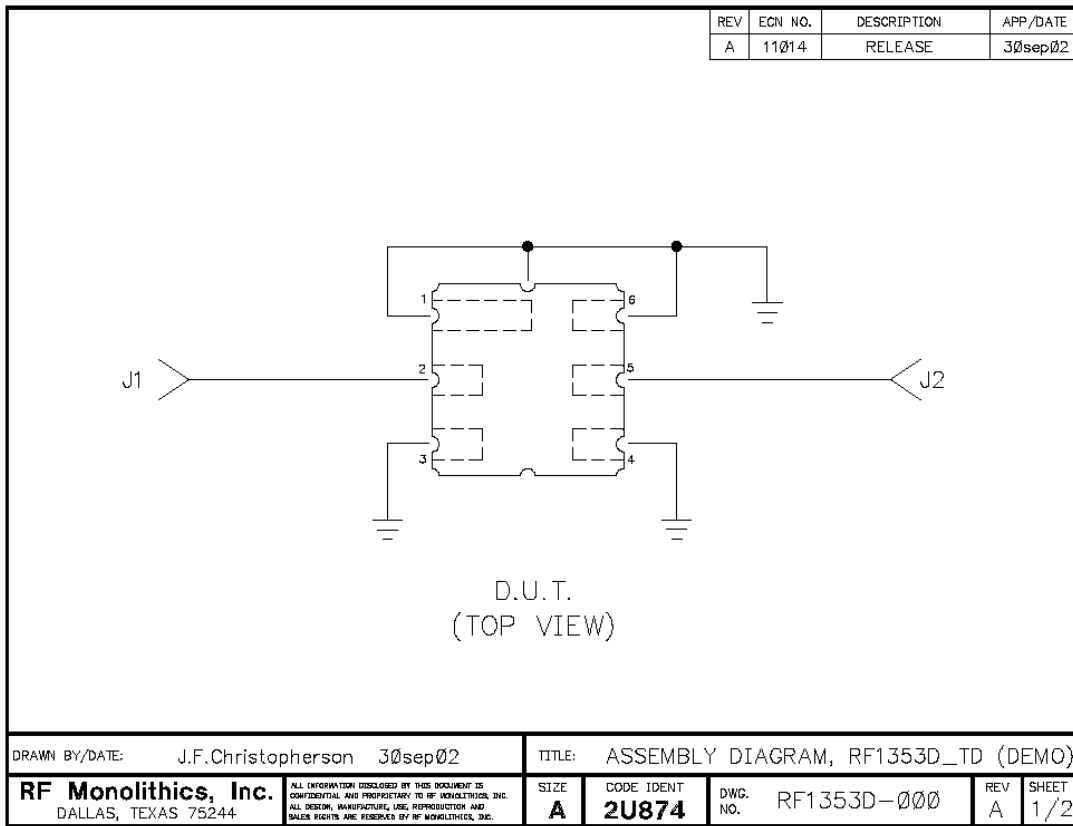
Connection		Terminals
Port 1	Single Ended Input	2
Port 2	Single Ended Output	5
	Ground	All others
Single Ended Operation Only		
Dot indicates Pin 1		

TOP VIEW

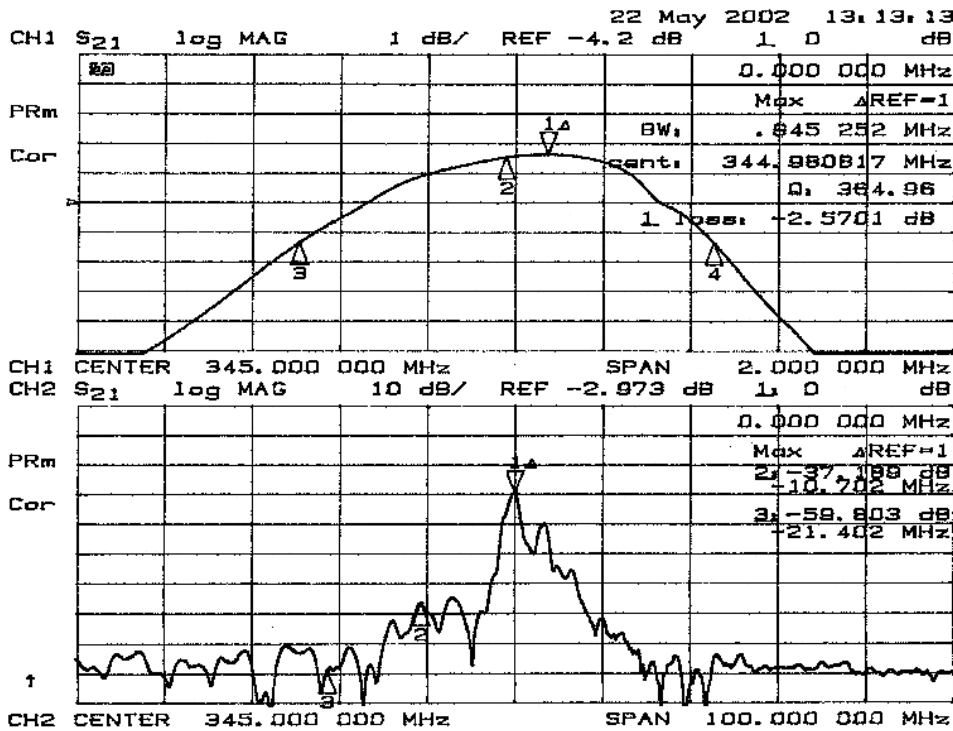


BOTTOM VIEW





RF1353D

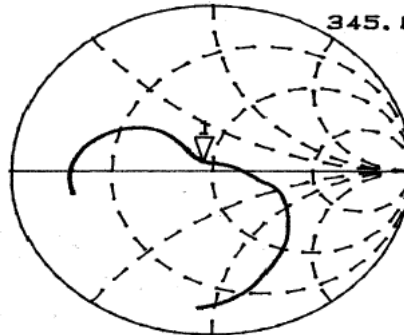


22 May 2002 13:10:14

CH1 S₁₁ 1 U FS 1 46.676 n 4.9043 n 2.2624 nH

345.000 000 MHz

PRm
Cor

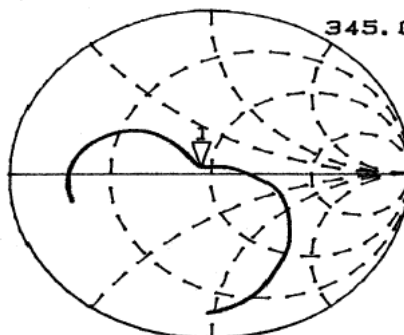


↑

CH2 S₂₂ 1 U FS 1 46.029 n 3.8633 n 1.7822 nH

345.000 000 MHz

PRm
Cor



↑

CENTER 345.000 000 MHz SPAN 2.000 000 MHz