

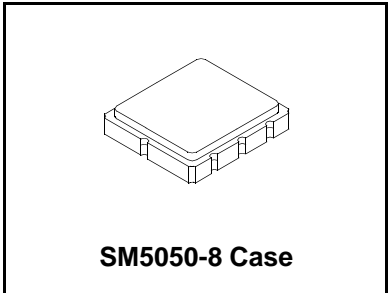


RF1353C

- **Designed for 345 MHz Wireless Applications**
- **Advanced (Lithium Tantalate) LiTaO3 design for low Insertion Loss**
- **Designed for match to 50 ohms, no external LC required**
- **Hermetically sealed Surface Mount package**
- **Complies with Directive 2002/95/EC (RoHS)**



**345.00 MHz
SAW Filter**



Absolute Maximum Ratings

Rating	Value	Units
Maximum Input Power	+10	dBm
DC Voltage Between Terminals	30	VDC
Case Temperature	-40 to +85	°C

Electrical Characteristics

Characteristic	Sym	Notes	Minimum	Typical	Maximum	Units
Nominal Operating Frequency	f _C			345		MHz
Passband	Insertion Loss	IL			4.5	dB
	3.0 dB Bandwidth		F _c ±70	F _c ±430	F _c ±1100	kHz
Rejection	F _c -10.7 MHz		15			dB
	F _c -21.4 MHz		40			dB
Matching	Untuned response			50		Ω
Ambient Temperature	Operating Range		-10		70	°C
Footprint Size: 5.0 X 5.0	SM5050-8					
Lid Symbolization (YY=Year, WW=week, S=shift)	RFM, 446, YYWWS					

Electrical Connections

Connection	Terminals
RF Input	2
RFOutput	6
Case Ground	All Others



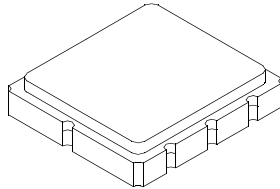
CAUTION: Electrostatic Sensitive Device. Observe precautions for handling.

Notes:

- 1.) All specifications apply over the operating temperature range with filter soldered to the specified demonstration board unless noted otherwise.
- 2.) Ultimate rejection is dependent on PCB layout.
- 3.) Specifications subject to change without notice.
- 4.) Electrostatic Sensitive Device. Observe precautions for handling.
- 5.) US and international patents may apply.
- 6.) RFM, RFM logo, and RF Monolithics, Inc. are registered trademarks of RF Monolithics, Inc.

SM5050-8 Case

8-Terminal Ceramic Surface-Mount Case 5.0 X 5.0 mm Nominal Footprint



Case Dimensions

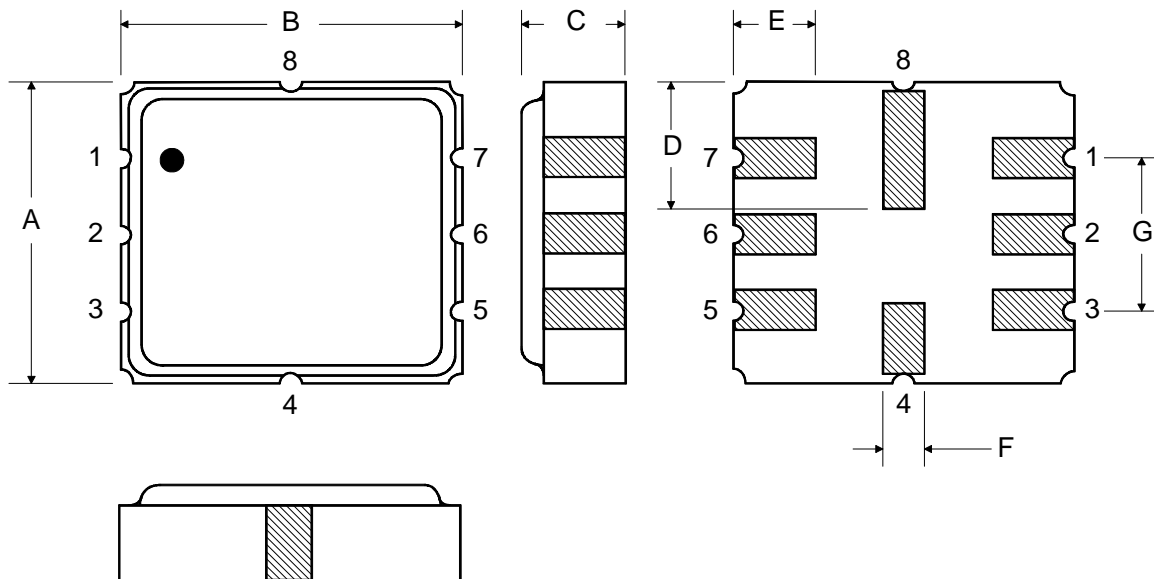
Dimension	mm			Inches		
	Min	Nom	Max	Min	Nom	Max
A	4.8	5.0	5.2		0.1968	
B	4.8	5.0	5.2		0.1968	
C			1.7			0.0669
D		2.08			0.0818	
E		1.17			0.046	
F		0.64			0.0252	
G	2.39	2.54	2.69		0.100	

Electrical Connections

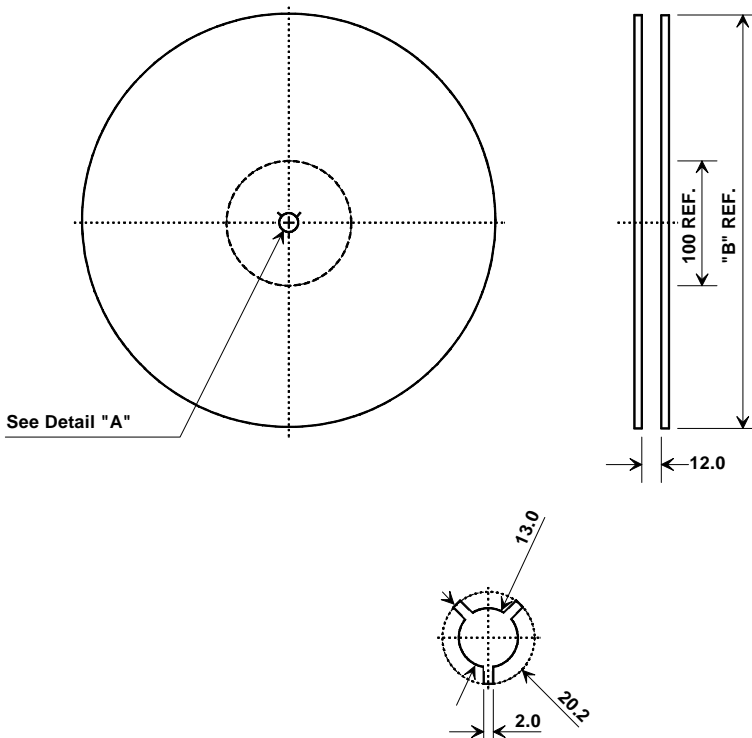
Connection		Terminals
Port 1	Differential Input	1, 2
Port 2	Differential Output	5, 6
	Ground	All others
Single Ended Operation		Return is ground
Differential Operation		Return is hot
Dot indicates Pin 1		

TOP VIEW

BOTTOM VIEW



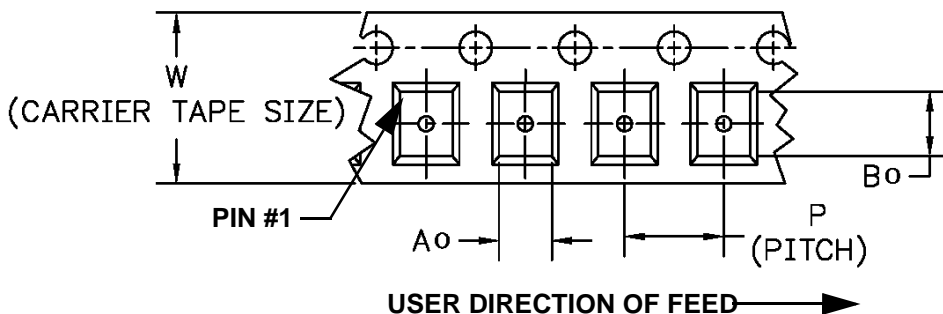
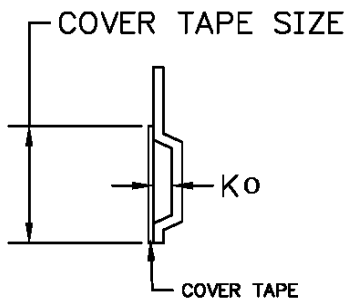
Tape and Reel Specifications

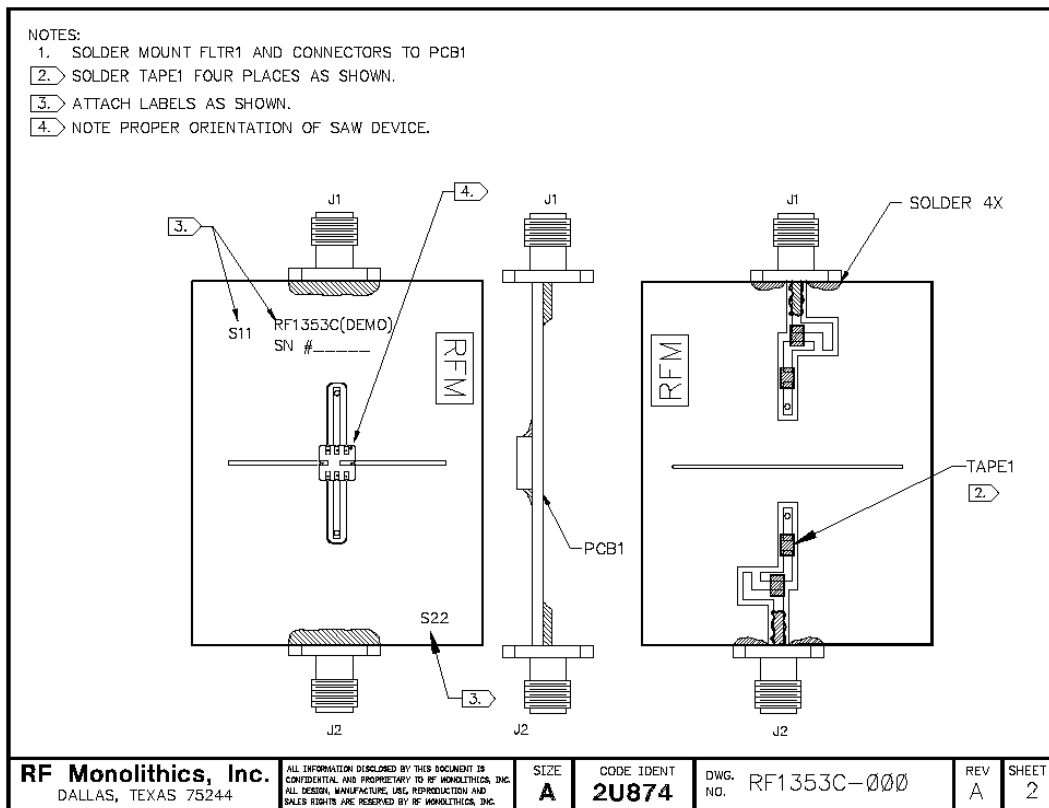
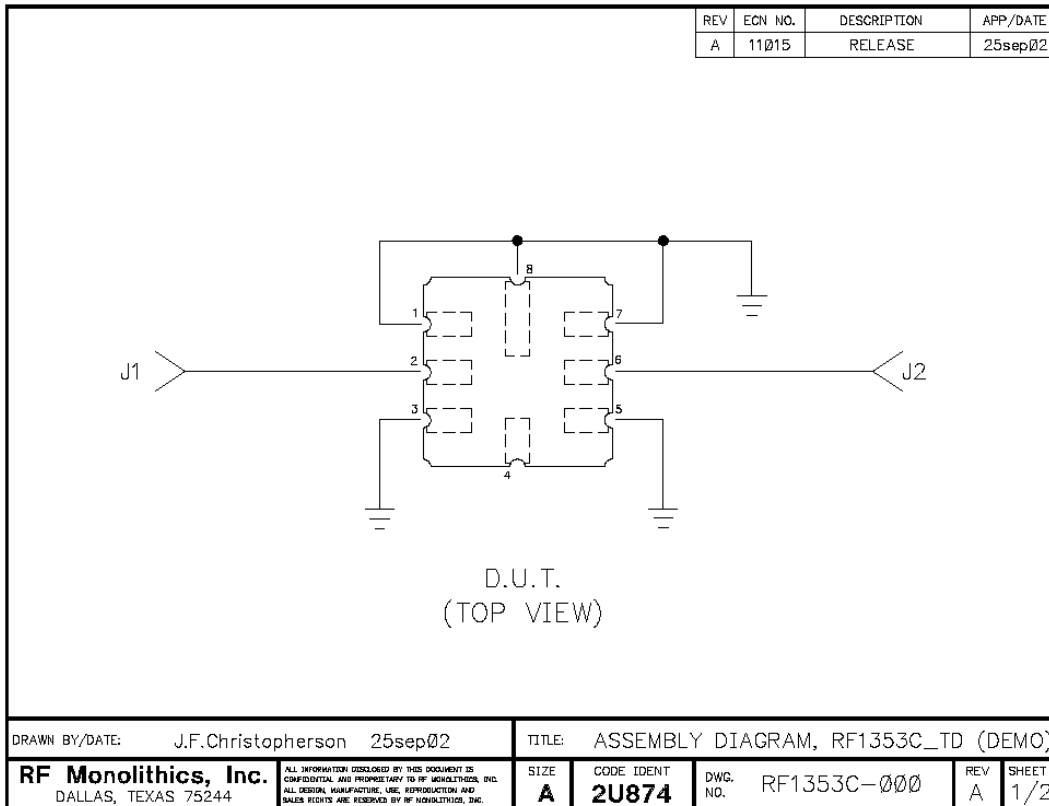


"B" Nominal Size		Quantity Per Reel
Inches	millimeters	
7	178	1000
13	330	3000

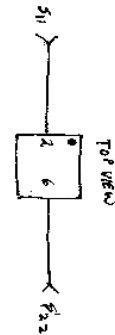
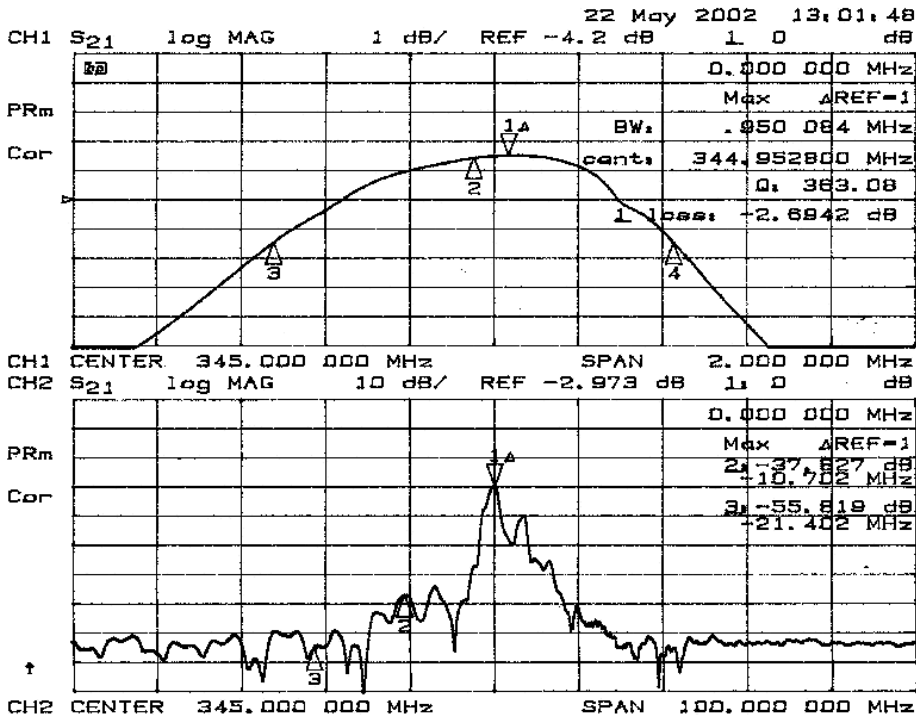
COMPONENT ORIENTATION and DIMENSIONS

Carrier Tape Dimensions	
Ao	5.3 mm
Bo	5.3 mm
Ko	2.0 mm
Pitch	8.0 mm
W	12.0 mm





RF1353C



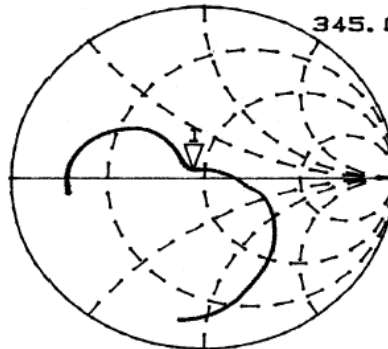
22 May 2002 13:06:59

CH1 S₁₁ 1 U FS 1 45.432 n 4.3457 n 2.0048 nH

345.000 000 MHz

PRm

Cor

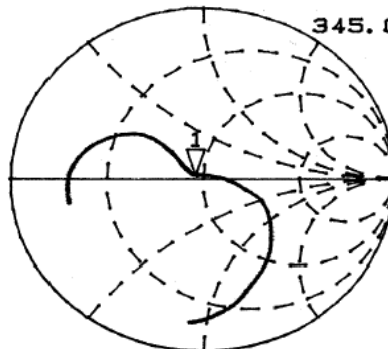


CH2 S₂₂ 1 U FS 1 46.686 n 2.0625 n 951.47 pH

345.000 000 MHz

PRm

Cor



CENTER 345.000 000 MHz SPAN 2.000 000 MHz