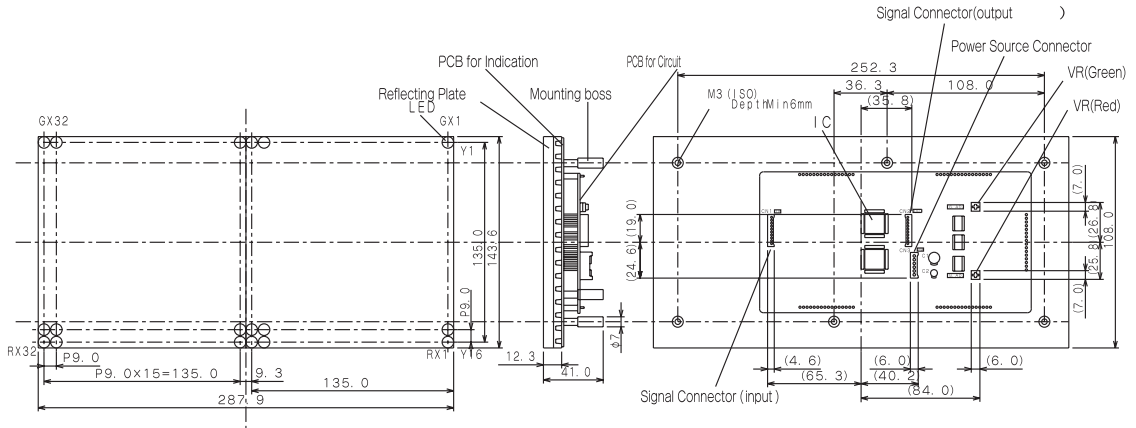


PANEL DISPLAY UNITS

288 × 144 mm

φ 8 mm 32 × 16 Dots LNP178011

Outline Drawing



Absolute Maximum Ratings (Ta = 25°C)

| Item | Symbol | Ratings | Unit |
|-------------------------------|------------------|-------------------------------|------|
| Supply Voltage for Logic | V _{CC} | - 0.3 ~ + 5.5 | V |
| Supply Voltage for LED | V _{LED} | Max 5.5 | V |
| Input Voltage | V _{in} | - 0.3 ~ V _{CC} + 0.3 | V |
| Operating Ambient Temperature | T _{opr} | - 10 ~ + 45 | °C |
| Storage Temperature | T _{stg} | - 25 ~ + 85 | °C |

Main Specifications (Ta = 25°C)

| Item | Symbol | Ratings | Unit | |
|---|----------------|---------------------------------------|--|----|
| Display Colors | | Red, Green, Amber | | |
| Dot Diameter | | φ 8.0 | mm | |
| Dots Pitch | | 9.0 | mm | |
| Dot Total Number | | 512 (32 × 16) | | |
| Display Surface Size | | 288× 144 | mm | |
| Brightness (when lighting all lamps) | B | Red : 100 Green : 120 Controllable | cd/m ² | |
| Operating Method | | 1/16(Duty) Dynamic lighting | | |
| Clock Frequency | CLK | Max 5 | MHz | |
| for Logic | Supply Voltage | V _{CC} | 5.0 ± 0.25 | V |
| | Supply Current | I _{CC} | Max 12 | mA |
| for LED | Supply Voltage | V _{LED} | 5.0 ± 0.2 | V |
| | Supply Current | I _{LED} | Max 5.6 when two colors are all turned "ON" | A |
| Weight | | 640 | g | |