

JA3503A

DELAYING RELAY



Typical Applications

Delaying control of lamp & radiator

Features

- Solid base design, stable structure
- Maturing circuit, stable and reliable performances
- Surface mounting technology, advanced craftwork

CHARACTERISTICS

Norminal voltage	12VDC
Operating voltage range	9VDC to 16VDC
Contact rating	Resistive: 15A 13.5VDC
Delaying time ¹⁾	9s ± 2s
Electrical endurance	1×10 ⁵ OPS (at nomi. vol.)

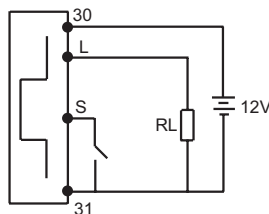
1) When demand of time delay is different from above, please contact Hongfa for more technology support.

Ambient temperature	-40°C to 85°C
Vibration resistance	10Hz to 200Hz 49m/s ² (5g)
Shock resistance	196m/s ² (20g)
Weight	Approx. 40g
Mechanical data	cover retention (pull & push): 250N min. terminal retention (pull & push): 110N min.

OUTLINE DIMENSIONS AND WIRING DIAGRAM

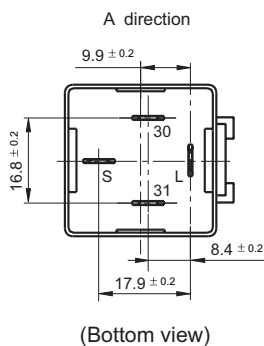
Unit: mm

Wiring Diagram

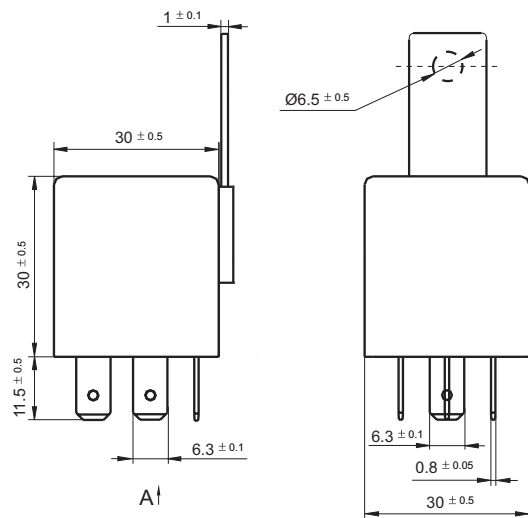


1. As shown in left wiring diagram, for JA3503A, terminal 30 is connected with anode of 12VDC, terminal 31 with cathode of battery, and terminal S with switch, terminal L with load.
2. Once terminal S gets low potential (0VDC to 1.2VDC), contact of inner relay will close, terminal L and 30 will switch on. When the low potential signal remove from terminal S loses, delay signal is sent out, after 9s±2s, terminal L and 30 will switch off, for more specific information, please refer to following controlling figure:
3. Triggering time of low potential for terminal S shall be not less than 0.3s.

Terminal Layout



Outline Dimensions



HONGFA RELAY

ISO9001、ISO/TS16949、ISO14001、OHSAS18001 CERTIFIED

2007 Rev. 1.00