



**TO-92 Encapsulate Three-terminal voltage regulator**

**CJ79L08** Three-terminal negative voltage regulator

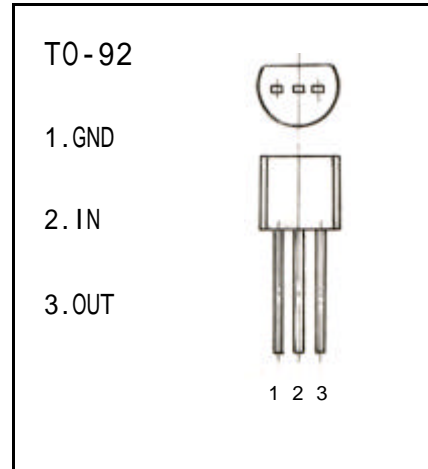
**FEATURES**

Maximum Output current

$I_{OM}$ : 0.1A

Output voltage

$V_o$ : -8 V



**ABSOLUTE MAXIMUM RATINGS ( Operating temperature range applies unless otherwise specified )**

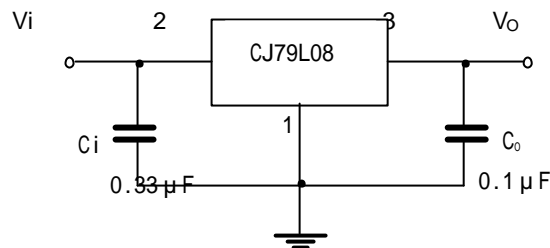
Parameter	Symbol	Value	Units
Input Voltage	$V_i$	-30	V
Operating Junction Temperature Range	$T_{OPR}$	0—+125	
Storage Temperature Range	$T_{STG}$	-55—+150	

**ELECTRICAL CHARACTERISTICS**

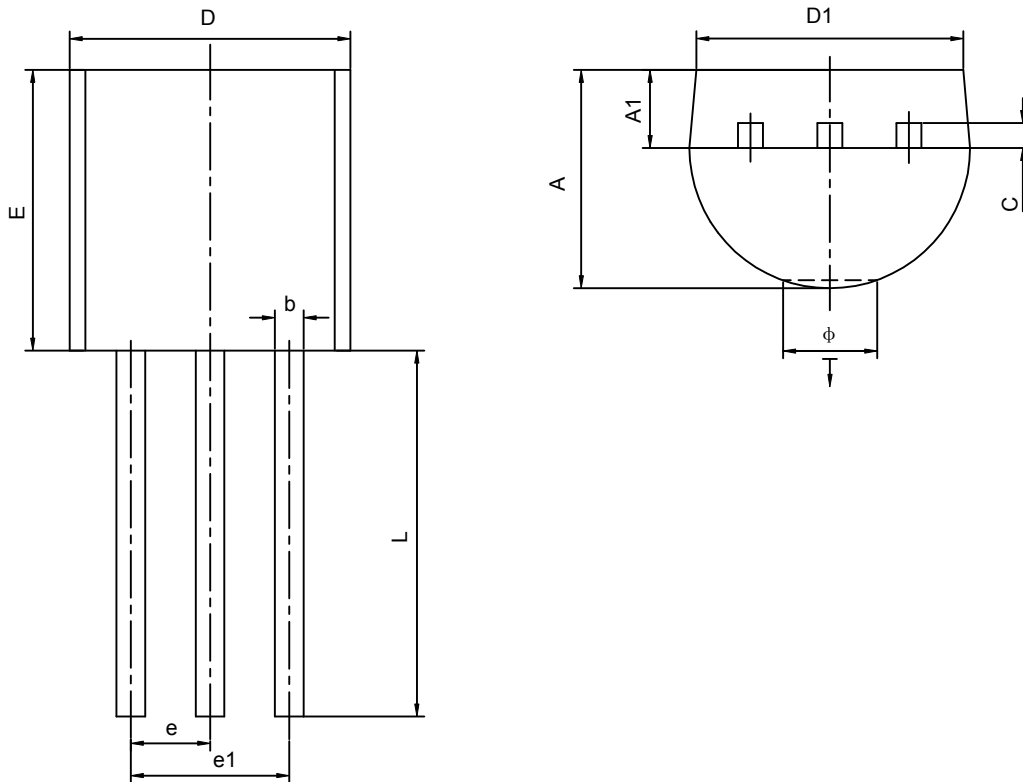
( $V_i=-14V, I_o=40mA, 0 < T_j < 125$  ,  $C_1=0.33 \mu F, C_o=0.1 \mu F$ , unless otherwise specified )

Parameter	Symbol	Test conditions	MIN	TYP	MAX	UNIT
Output voltage	$V_o$	$V_{IN}=-14V, I_o=40mA$	-7.7	-8.0	-8.3	V
Line Regulation	$V_o-V_{IN}$	$V_{IN}=-10.5\sim-23V, I_o=40mA$		42	200	mV
Load Regulation	$V_o-I_o$	$V_{IN}=-14V, I_o=1\sim100mA$		30	100	mV
Quiescent Current	$I_Q$	$V_{IN}=-14V, I_o=40mA$			6.0	mA
Ripple Rejection	RR	$V_{IN}=-11V\sim-21V, I_o=40mA, e_{iN}=1V_{P-P}, f=120Hz$	37	46		dB
Output Noise Voltage	$V_{NO}$	$V_{IN}=-14V, f=10Hz\sim100KH, I_o=40mA$		54		$\mu V$

**TYPICAL APPLICATION**



## TO-92 PACKAGE OUTLINE DIMENSIONS



Symbol	Dimensions In Millimeters		Dimensions In Inches	
	Min	Max	Min	Max
<b>A</b>	3.300	3.700	0.130	0.146
<b>A1</b>	1.100	1.400	0.043	0.055
<b>b</b>	0.380	0.550	0.015	0.022
<b>c</b>	0.360	0.510	0.014	0.020
<b>D</b>	4.400	4.700	0.173	0.185
<b>D1</b>	3.430		0.135	
<b>E</b>	4.300	4.700	0.169	0.185
<b>e</b>	1.270TYP		0.050TYP	
<b>e1</b>	2.440	2.640	0.096	0.104
<b>L</b>	14.100	14.500	0.555	0.571
<b>Ö</b>		1.600		0.063
$\downarrow$	0.000	0.380	0.000	0.015