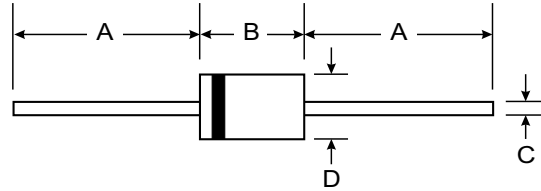


Features

- High Reliability
- High Conductance
- For General Purpose Switching Applications
- Available in Surface Mount Version (LL4454)



Mechanical Data

- Case: DO-35, Plastic
- Leads: Solderable per MIL-STD-202, Method 208
- Marking: Type Number
- Polarity: Cathode Band
- Weight: 0.13 grams (approx.)

DO-35		
Dim	Min	Max
A	25.40	—
B	—	4.00
C	—	0.60
D	—	2.00
All Dimensions in mm		

Maximum Ratings @ T_A = 25°C unless otherwise specified

Characteristic	Symbol	1N4454	Unit
Peak Repetitive Reverse Voltage	V _{RRM}	75	V
Working Peak Reverse Voltage	V _{RWM}		
DC Blocking Voltage	V _R		
Forward Continuous Current (Note 1)	I _{FM}	300	mA
Average Rectified Output Current (Note 1)	I _O	150	mA
Non-Repetitive Peak Forward Surge Current @ t ≤ 1.0s @ t = 1.0μs	I _{FSM}	1.0 2.0	A
Power Dissipation (Note 1)	P _d	400	mW
Thermal Resistance, Junction to Ambient Air (Note 1)	R _{θJA}	300	K/W
Operating and Storage Temperature Range	T _J , T _{STG}	-65 to +175	°C

Electrical Characteristics @ T_A = 25°C unless otherwise specified

Characteristic	Symbol	Min	Typ	Max	Unit	Test Condition
Maximum Forward Voltage Drop	V _{FM}	—	—	1.0	V	I _F = 10mA
Maximum Peak Reverse Current	I _{RM}	—	—	100	nA	V _R = 50V
Junction Capacitance	C _j	—	4.0	—	pF	V _R = 0V, f = 1.0MHz
Reverse Recovery Time	t _{rr}	—	4.0	—	ns	I _F = I _R = 10mA, I _{rr} = 0.1 x I _R , R _L = 100Ω

Note: 1. Valid provided that leads are kept at ambient temperature.