

# Coaxial Frequency Mixer

## ZLW-11

Level 7 (LO Power +7 dBm) 5 to 2000 MHz



CASE STYLE: M21

### Maximum Ratings

Operating Temperature	-55°C to 100°C
Storage Temperature	-55°C to 100°C
RF Power	50mW
IF Current	40mA

### Coaxial Connections

LO	1
RF	3
IF	2

### Features

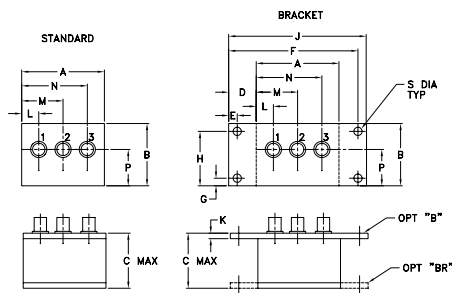
- low conversion loss, 6.85 dB typ.
- good L-R isolation, 35 dB typ., L-I, 30 dB typ.
- wideband, 5 to 2000 MHz
- rugged shielded case

### Applications

- VHF/UHF
- cellular
- GPS
- satellite distribution
- instrumentation

Connectors	Model	Price	Qty.
SMA	ZLW-11	\$71.95 ea.	(1-9)
BRACKET (OPTION "B")		\$5.00	(1+)
BRACKET (OPTION "BR")		\$2.50	(1+)

### Outline Drawing



### Outline Dimensions (inch/mm)

A	B	C	D	E	F	G	H
1.50	1.13	1.00	.50	.155	2.345	.138	.987
38.10	28.70	25.40	12.70	3.94	59.56	3.51	25.07

J	K	L	M	N	P	S	wt
2.50	.10	.31	.75	1.19	.66	.150	grams
63.50	2.54	7.87	19.05	30.23	16.76	3.81	40.0

### Electrical Specifications

FREQUENCY (MHz)	CONVERSION LOSS (dB)				LO-RF ISOLATION (dB)						LO-IF ISOLATION (dB)						
	LO/RF	IF	Mid-Band m	Total Range Max.	L		M		U		L		M		U		
$f_L-f_U$	$\bar{X}$	$\sigma$	Max.	Max.	Typ.	Min.	Typ.	Min.	Typ.	Min.	Typ.	Min.	Typ.	Min.	Typ.	Min.	
5-2000	10-600	6.85	0.10	8.5	9.0	50	45	35	25	30	20	45	40	30	20	25	15

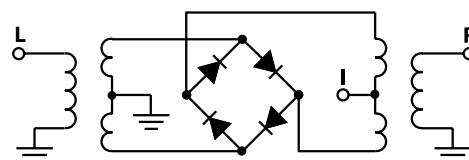
1 dB COMP.: +1 dBm typ.

L = low range [ $f_L$  to  $10 f_L$ ] M = mid range [ $10 f_L$  to  $f_U/2$ ] U = upper range [ $f_U/2$  to  $f_U$ ]  
 m = mid band [ $2f_L$  to  $f_U/2$ ]

### Typical Performance Data

Frequency (MHz)	Conversion Loss (dB)	Isolation L-R (dB)	Isolation L-I (dB)	VSWR RF Port (:1)	VSWR LO Port (:1)
5.00	35.00	5.85	46.19	>67.00	3.19
10.00	40.00	5.88	46.23	>67.00	2.54
20.00	50.00	6.11	46.26	>67.00	2.45
50.00	80.00	6.37	45.89	>67.00	2.62
100.00	70.00	6.25	44.70	64.66	2.96
200.00	170.00	6.62	41.17	55.90	3.21
311.92	281.92	6.71	38.72	50.11	3.31
465.39	435.39	7.06	37.94	46.15	3.42
618.85	588.85	7.40	38.38	45.38	3.19
772.31	742.31	7.53	38.07	45.67	2.96
849.04	819.04	7.22	37.13	43.78	2.41
1000.00	970.00	7.05	36.28	38.27	2.10
1156.00	1126.00	6.76	35.18	43.23	1.86
1386.20	1356.20	7.53	41.65	38.52	2.12
1462.90	1432.90	7.62	41.43	41.57	2.27
1500.00	1470.00	7.48	41.94	42.71	2.19
1616.40	1586.40	6.96	43.41	43.97	2.08
1800.20	1770.00	6.79	41.03	38.23	1.87
1923.30	1893.30	6.64	38.49	30.27	1.79
2000.00	1970.00	6.69	39.35	27.98	1.67

### Electrical Schematic



**Mini-Circuits**  
 ISO 9001 ISO 14001 CERTIFIED

ALL NEW  
**minicircuits.com**

P.O. Box 350166, Brooklyn, New York 11235-0003 (718) 934-4500 Fax (718) 332-4661 For detailed performance specs & shopping online see Mini-Circuits web site



The Design Engineers Search Engine Provides ACTUAL Data Instantly From MINI-CIRCUITS At: [www.minicircuits.com](http://www.minicircuits.com)

RF/IF MICROWAVE COMPONENTS

REV. OR  
 M93710  
 ZLW-11  
 DJ/TD/CP  
 070221  
 Page 1 of 2

