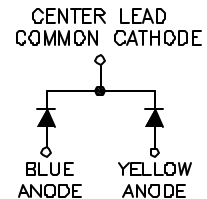
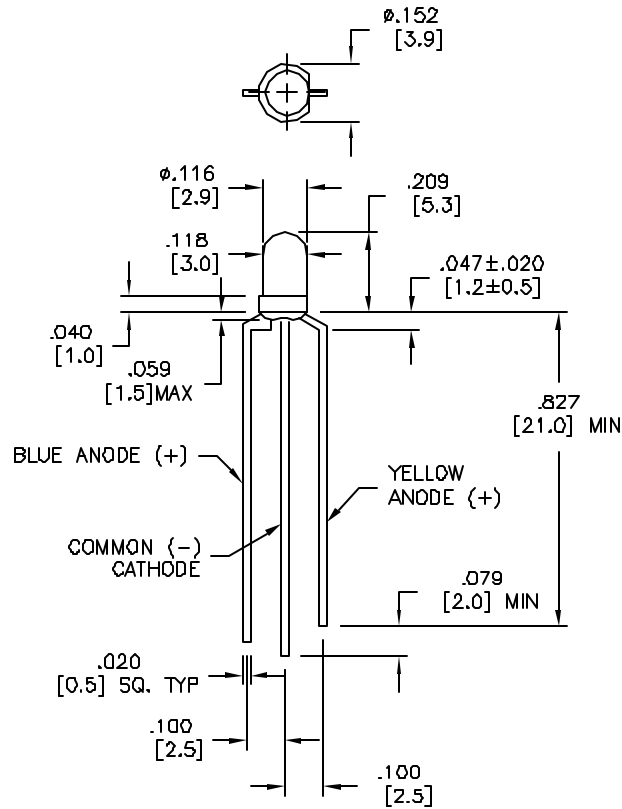


LTR	REVISION	DATE	APPD
-	RELEASED	01-20-05	



NOTES:

1. ALL DIMS ARE IN INCHES (MILLIMETERS).
2. TOLERANCE IS $\pm 0.010"$ ($\pm 0.25\text{mm}$) UNLESS OTHERWISE SPECIFIED.
3. LEAD SPACING IS MEASURED WHERE LEADS EMERGE FROM THE PACKAGE.
4. LEADS TO BE SOLDERABLE AND CAPABLE OF MEETING THE SOLDERABILITY REQUIREMENTS OF MIL-STD-202, METHOD 208.
5. MANUFACTURE DATE SHALL NOT BE OLDER THAN 26 WEEKS (6 MONTHS).

LEDTRONICS PART NO.	L.E.D. RADIATION COLOR	L.E.D. APPEARANCE	ABSOLUTE MAXIMUM RATINGS ($T_a=25^\circ\text{C}$)					ELECTRO-OPTICAL CHARACTERISTICS ($T_a=25^\circ\text{C}$)							
			Pd mW	I _{fp} ^a mA	I _f mA	V _r V	T _{opr} (°C)	I _f mA	I _v med typ	V _f =V typ/max	VIEW ANGLE 2θ/2	I _r max μA	Δλ nm	λ _{0.001} nm	λ _{Peak} nm
L120TWPB1KY4-3C	SUPER BLUE	WHITE DIFFUSED	120	150	30	5	-40 TO +80	20	250	3.5/4.0	40	100	30	473	470
	YELLOW		80	150	30	5	-40 TO +80	20	20	2.0/2.6	40	100	15	589	585

Tstg: -40°C TO +85°C *Condition for I_{fp} is pulse of 1/10 duty and 0.1msec width.
LEAD SOLDERING TEMP: [1.6mm (.063in) FROM BODY] 260°C FOR 5 SEC.

<p>LEDTRONICS, INC. 23105 KASHIWA COURT TORRANCE, CA 90505</p>	PROPRIETARY. This document contains Proprietary Information of LEDTRONICS, INC. It may not be copied, used or disclosed for any purpose without the prior express written consent of LEDTRONICS, INC.		TITLE L120TWPB1KY4-3C			
	DWG NO DSDD0150	SCALE 2:1	SHEET 1 OF 1	DATE 01-20-05		
	CODE IDENT NO. 8Z410	DWG BY RM	CHK BY PL	QA GZ	MFG 02-15-05	CUSTOMER 02-15-05