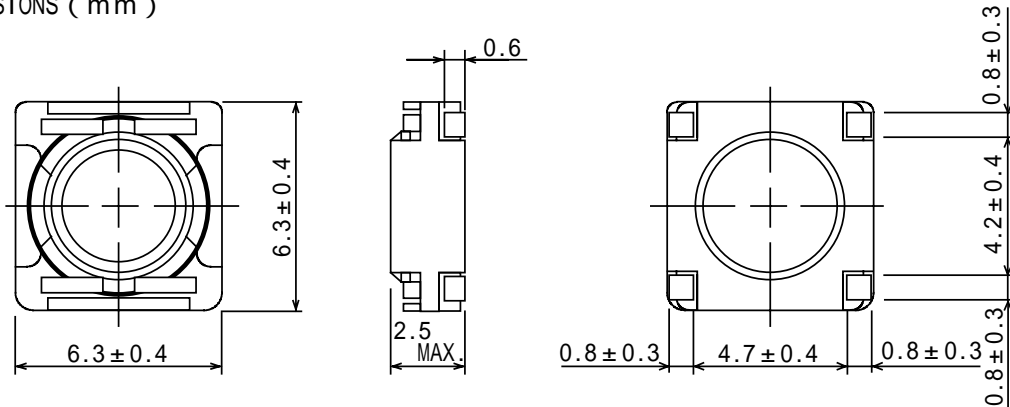


SPECIFICATION

TYPE CDRC62

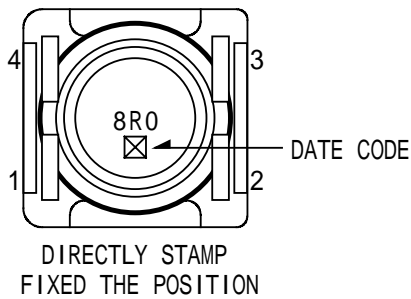
1. APPEARANCE

1-1. DIMENSIONS (mm)

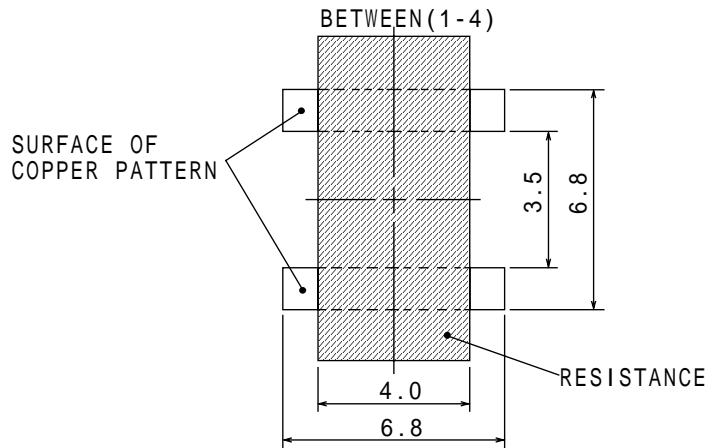


* DIMENSION WITHOUT TOLERANCE ARE APPROX.

1-2. STAMP (E.G.)



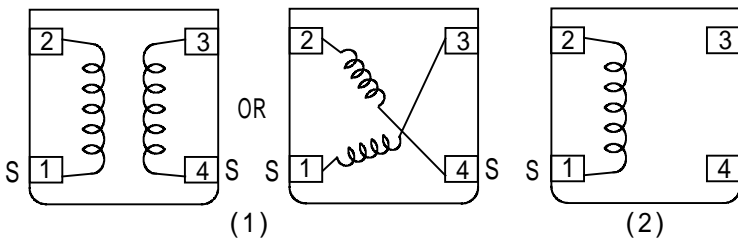
1-3. RECOMMENDED LAND PATTERNS DIMENSION (mm)



PLEASE MAKE SURE TO MAKE THE RESISTANCE, WHEN TERMINAL #1 IS CONNECTED TO #4 AND TERMINAL #2 IS CONNECTED TO #3 WITH COPPER PATTERN UNDER THE COIL.

2. COIL SPECIFICATION

2-1. CONNECTION (BOTTOM VIEW)



(1)
 $8.0 \mu\text{H} \sim 180 \mu\text{H}$
"S" IS WINDING START.

(2)
 $220 \mu\text{H} \sim 1.2\text{mH}$

<p>RoHS compliance Cd: Max. 0.01wt% others: Max. 0.1wt%</p>
--

SPECIFICATION

TYPE CDRC62

2-2 . ELECTRICAL CHARACTERISTICS (IN THE CASE OF REEL)

NO.	PART NO.	STAMP	INDUCTANCE [WITHIN] 1	D.C.R. () [MAX.] (at 20) 3	RATED CURRENT (mA) 2	S.R.F. (MHz) [TYP.]	SUMIDA CODE
01	CDRC62NP-8R0NC	8R0	8 μH ± 25%	0.077 (0.062)	764	38.6	4747-0069
02	CDRC62NP-100NC	100	10 μH ± 25%	0.104 (0.083)	712	33.9	4747-0070
03	CDRC62NP-150NC	150	15 μH ± 25%	0.131 (0.105)	556	27.6	4747-0071
04	CDRC62NP-220NC	220	22 μH ± 25%	0.200 (0.160)	467	23.0	4747-0072
05	CDRC62NP-330NC	330	33 μH ± 25%	0.264 (0.211)	374	18.9	4747-0073
06	CDRC62NP-390NC	390	39 μH ± 25%	0.381 (0.305)	354	16.9	4747-0074
07	CDRC62NP-470NC	470	47 μH ± 25%	0.430 (0.344)	320	15.0	4747-0075
08	CDRC62NP-560NC	560	56 μH ± 25%	0.480 (0.384)	290	14.0	4747-0076
09	CDRC62NP-680NC	680	68 μH ± 25%	0.624 (0.499)	248	12.2	4747-0077
10	CDRC62NP-820NC	820	82 μH ± 25%	0.671 (0.537)	237	11.4	4747-0078
11	CDRC62NP-101MC	101	100 μH ± 20%	0.769 (0.615)	212	10.2	4747-0080
12	CDRC62NP-121MC	121	120 μH ± 20%	1.02 (0.816)	194	9.4	4747-0082
13	CDRC62NP-151MC	151	150 μH ± 20%	1.43 (1.14)	174	8.6	4747-0083
14	CDRC62NP-181MC	181	180 μH ± 20%	1.60 (1.28)	160	7.5	4747-0084
15	CDRC62NP-221MC	221	220 μH ± 20%	1.77 (1.42)	142	7.2	4747-0085
16	CDRC62NP-271MC	271	270 μH ± 20%	2.30 (1.84)	130	6.5	4747-0086
17	CDRC62NP-331MC	331	330 μH ± 20%	2.71 (2.16)	117	5.8	4747-0087
18	CDRC62NP-391MC	391	390 μH ± 20%	3.02 (2.42)	108	5.3	4747-0088
19	CDRC62NP-471MC	471	470 μH ± 20%	3.93 (3.14)	98	4.8	4747-0089
20	CDRC62NP-561MC	561	560 μH ± 20%	4.46 (3.57)	91	4.4	4747-0090
21	CDRC62NP-681MC	681	680 μH ± 20%	6.05 (4.84)	83	4.0	4747-0091
22	CDRC62NP-821MC	821	820 μH ± 20%	6.79 (5.43)	75	3.7	4747-0093
23	CDRC62NP-102MC	102	1.0 mH ± 20%	9.98 (7.98)	66	3.3	4747-0094
24	CDRC62NP-122MC	122	1.2 mH ± 20%	11.8 (9.44)	62	3.0	4747-0095

SPECIFICATION

TYPE CDRC62

2-3.ELECTRICAL CHARACTERISTICS (IN THE CASE OF BOX)

NO.	PART NO.	STAMP	INDUCTANCE [WITHIN] 1	D.C.R. () [MAX.] (at 20) 3	RATED CURRENT (mA) 2	S.R.F. (MHz) [TYP.]	SUMIDA CODE
25	CDRC62NP-8R0NB	8R0	8 μH ± 25%	0.077 (0.062)	764	38.6	4747-0096
26	CDRC62NP-100NB	100	10 μH ± 25%	0.104 (0.083)	712	33.9	4747-0097
27	CDRC62NP-150NB	150	15 μH ± 25%	0.131 (0.105)	556	27.6	4747-0098
28	CDRC62NP-220NB	220	22 μH ± 25%	0.200 (0.160)	467	23.0	4747-0099
29	CDRC62NP-330NB	330	33 μH ± 25%	0.264 (0.211)	374	18.9	4747-0100
30	CDRC62NP-390NB	390	39 μH ± 25%	0.381 (0.305)	354	16.9	4747-0101
31	CDRC62NP-470NB	470	47 μH ± 25%	0.430 (0.344)	320	15.0	4747-0102
32	CDRC62NP-560NB	560	56 μH ± 25%	0.480 (0.384)	290	14.0	4747-0104
33	CDRC62NP-680NB	680	68 μH ± 25%	0.624 (0.499)	248	12.2	4747-0105
34	CDRC62NP-820NB	820	82 μH ± 25%	0.671 (0.537)	237	11.4	4747-0106
35	CDRC62NP-101MB	101	100 μH ± 20%	0.769 (0.615)	212	10.2	4747-0107
36	CDRC62NP-121MB	121	120 μH ± 20%	1.02 (0.816)	194	9.4	4747-0108
37	CDRC62NP-151MB	151	150 μH ± 20%	1.43 (1.14)	174	8.6	4747-0109
38	CDRC62NP-181MB	181	180 μH ± 20%	1.60 (1.28)	160	7.5	4747-0110
39	CDRC62NP-221MB	221	220 μH ± 20%	1.77 (1.42)	142	7.2	4747-0111
40	CDRC62NP-271MB	271	270 μH ± 20%	2.30 (1.84)	130	6.5	4747-0112
41	CDRC62NP-331MB	331	330 μH ± 20%	2.71 (2.16)	117	5.8	4747-0113
42	CDRC62NP-391MB	391	390 μH ± 20%	3.02 (2.42)	108	5.3	4747-0115
43	CDRC62NP-471MB	471	470 μH ± 20%	3.93 (3.14)	98	4.8	4747-0116
44	CDRC62NP-561MB	561	560 μH ± 20%	4.46 (3.57)	91	4.4	4747-0117
45	CDRC62NP-681MB	681	680 μH ± 20%	6.05 (4.84)	83	4.0	4747-0118
46	CDRC62NP-821MB	821	820 μH ± 20%	6.79 (5.43)	75	3.7	4747-0119
47	CDRC62NP-102MB	102	1.0 mH ± 20%	9.98 (7.98)	66	3.3	4747-0120
48	CDRC62NP-122MB	122	1.2 mH ± 20%	11.8 (9.44)	62	3.0	4747-0121

1 : MEASURED FREQUENCY L 8.0 μH ~ 82 μH ; at 100kHz
100 μH ~ 1.2mH ; at 1kHz

2: THIS INDICATES THE VALUE OF CURRENT WHEN THE INDUCTANCE IS 25% LOWER THAN ITS NOMINAL VALUE AT D.C. SUPERPOSITION OR D.C. CURRENT WHEN T=40 WHICHEVER IS LOWER.(Ta=20)

3: D.C.R. () IS TYPICAL VALUE.

3. STORAGE TEMPERATURE RANGE : - 40 ~ + 100

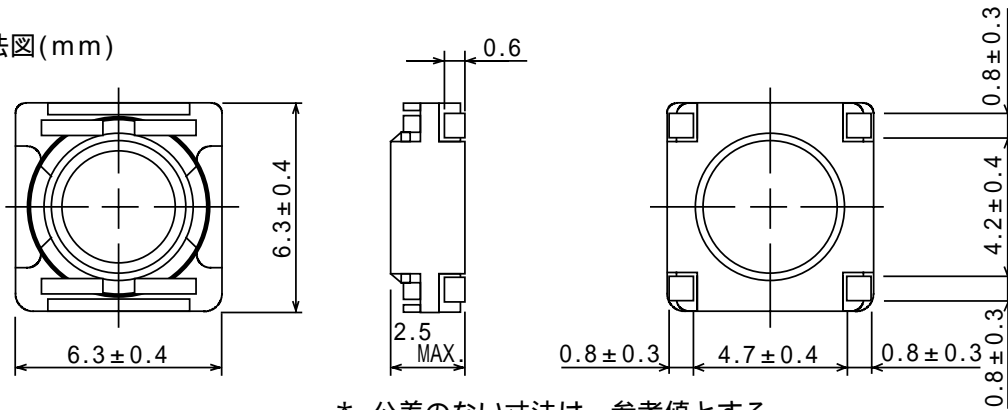
OPERATING TEMPERATURE RANGE: - 40 ~ + 100 (INCLUDING SELF TEMPERATURE RISE)

仕様書

形名
CDRC62

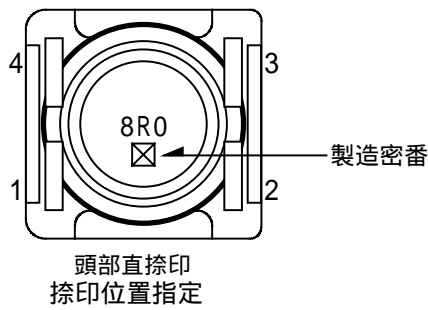
1. 外形

1-1. 寸法図(mm)

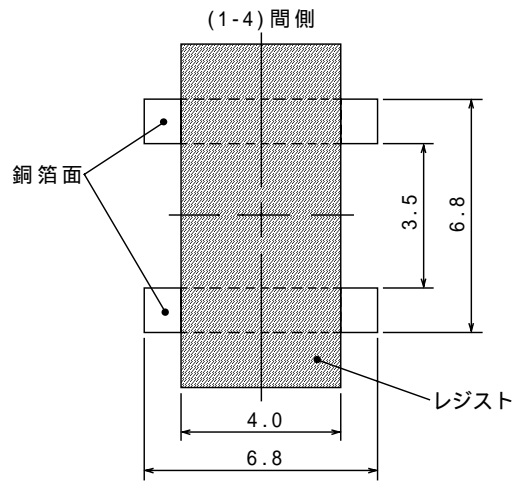


* 公差のない寸法は、参考値とする。

1-2. 捺印表示例

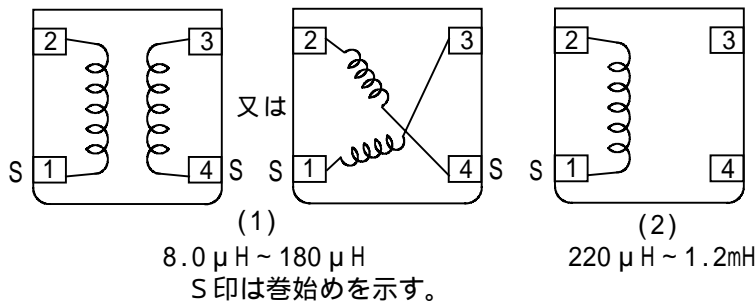


1-3. 推奨ランド図(mm)



2. コイル仕様

2-1. 端子接続図(裏面図)



注) 各々の端子を製品の下で続く場合は、必ずレジストを行って下さい。

RoHS
compliance
Cd: Max. 0.01wt%
others: Max. 0.1wt%

仕 様 書

形 名

CDRC62

2-2. 電気的特性 (リール梱包の場合)

NO.	品 名	表示	インダクタンス [以内] 1	D.C.R. () [以下] (at 20) 3	定格電流 (mA) 2	自己共振 周波数 (MHz) (参考値)	スミダ コード
01	CDRC62NP-8R0NC	8R0	8 μ H \pm 25%	0.077 (0.062)	764	38.6	4747-0069
02	CDRC62NP-100NC	100	10 μ H \pm 25%	0.104 (0.083)	712	33.9	4747-0070
03	CDRC62NP-150NC	150	15 μ H \pm 25%	0.131 (0.105)	556	27.6	4747-0071
04	CDRC62NP-220NC	220	22 μ H \pm 25%	0.200 (0.160)	467	23.0	4747-0072
05	CDRC62NP-330NC	330	33 μ H \pm 25%	0.264 (0.211)	374	18.9	4747-0073
06	CDRC62NP-390NC	390	39 μ H \pm 25%	0.381 (0.305)	354	16.9	4747-0074
07	CDRC62NP-470NC	470	47 μ H \pm 25%	0.430 (0.344)	320	15.0	4747-0075
08	CDRC62NP-560NC	560	56 μ H \pm 25%	0.480 (0.384)	290	14.0	4747-0076
09	CDRC62NP-680NC	680	68 μ H \pm 25%	0.624 (0.499)	248	12.2	4747-0077
10	CDRC62NP-820NC	820	82 μ H \pm 25%	0.671 (0.537)	237	11.4	4747-0078
11	CDRC62NP-101MC	101	100 μ H \pm 20%	0.769 (0.615)	212	10.2	4747-0080
12	CDRC62NP-121MC	121	120 μ H \pm 20%	1.02 (0.816)	194	9.4	4747-0082
13	CDRC62NP-151MC	151	150 μ H \pm 20%	1.43 (1.14)	174	8.6	4747-0083
14	CDRC62NP-181MC	181	180 μ H \pm 20%	1.60 (1.28)	160	7.5	4747-0084
15	CDRC62NP-221MC	221	220 μ H \pm 20%	1.77 (1.42)	142	7.2	4747-0085
16	CDRC62NP-271MC	271	270 μ H \pm 20%	2.30 (1.84)	130	6.5	4747-0086
17	CDRC62NP-331MC	331	330 μ H \pm 20%	2.71 (2.16)	117	5.8	4747-0087
18	CDRC62NP-391MC	391	390 μ H \pm 20%	3.02 (2.42)	108	5.3	4747-0088
19	CDRC62NP-471MC	471	470 μ H \pm 20%	3.93 (3.14)	98	4.8	4747-0089
20	CDRC62NP-561MC	561	560 μ H \pm 20%	4.46 (3.57)	91	4.4	4747-0090
21	CDRC62NP-681MC	681	680 μ H \pm 20%	6.05 (4.84)	83	4.0	4747-0091
22	CDRC62NP-821MC	821	820 μ H \pm 20%	6.79 (5.43)	75	3.7	4747-0093
23	CDRC62NP-102MC	102	1.0 mH \pm 20%	9.98 (7.98)	66	3.3	4747-0094
24	CDRC62NP-122MC	122	1.2 mH \pm 20%	11.8 (9.44)	62	3.0	4747-0095

仕様書

形名 CDRC62

2-3. 電気的特性 (箱梱包の場合)

NO.	品名	表示	インダクタンス [以内] 1	D.C.R. () [以下] (at 20) 3	定格電流 (mA) 2	自己共振 周波数 (MHz) (参考値)	スミダ コード
25	CDRC62NP-8R0NB	8R0	8 μH ± 25%	0.077 (0.062)	764	38.6	4747-0096
26	CDRC62NP-100NB	100	10 μH ± 25%	0.104 (0.083)	712	33.9	4747-0097
27	CDRC62NP-150NB	150	15 μH ± 25%	0.131 (0.105)	556	27.6	4747-0098
28	CDRC62NP-220NB	220	22 μH ± 25%	0.200 (0.160)	467	23.0	4747-0099
29	CDRC62NP-330NB	330	33 μH ± 25%	0.264 (0.211)	374	18.9	4747-0100
30	CDRC62NP-390NB	390	39 μH ± 25%	0.381 (0.305)	354	16.9	4747-0101
31	CDRC62NP-470NB	470	47 μH ± 25%	0.430 (0.344)	320	15.0	4747-0102
32	CDRC62NP-560NB	560	56 μH ± 25%	0.480 (0.384)	290	14.0	4747-0104
33	CDRC62NP-680NB	680	68 μH ± 25%	0.624 (0.499)	248	12.2	4747-0105
34	CDRC62NP-820NB	820	82 μH ± 25%	0.671 (0.537)	237	11.4	4747-0106
35	CDRC62NP-101MB	101	100 μH ± 20%	0.769 (0.615)	212	10.2	4747-0107
36	CDRC62NP-121MB	121	120 μH ± 20%	1.02 (0.816)	194	9.4	4747-0108
37	CDRC62NP-151MB	151	150 μH ± 20%	1.43 (1.14)	174	8.6	4747-0109
38	CDRC62NP-181MB	181	180 μH ± 20%	1.60 (1.28)	160	7.5	4747-0110
39	CDRC62NP-221MB	221	220 μH ± 20%	1.77 (1.42)	142	7.2	4747-0111
40	CDRC62NP-271MB	271	270 μH ± 20%	2.30 (1.84)	130	6.5	4747-0112
41	CDRC62NP-331MB	331	330 μH ± 20%	2.71 (2.16)	117	5.8	4747-0113
42	CDRC62NP-391MB	391	390 μH ± 20%	3.02 (2.42)	108	5.3	4747-0115
43	CDRC62NP-471MB	471	470 μH ± 20%	3.93 (3.14)	98	4.8	4747-0116
44	CDRC62NP-561MB	561	560 μH ± 20%	4.46 (3.57)	91	4.4	4747-0117
45	CDRC62NP-681MB	681	680 μH ± 20%	6.05 (4.84)	83	4.0	4747-0118
46	CDRC62NP-821MB	821	820 μH ± 20%	6.79 (5.43)	75	3.7	4747-0119
47	CDRC62NP-102MB	102	1.0 mH ± 20%	9.98 (7.98)	66	3.3	4747-0120
48	CDRC62NP-122MB	122	1.2 mH ± 20%	11.8 (9.44)	62	3.0	4747-0121

1 : 測定周波数 L 8.0 μH ~ 82 μH ; at 100 kHz
 100 μH ~ 1.2mH ; at 1 kHz

2 : 定格電流は直流重畳特性に於て、インダクタンスが公称値より-25%となる電流もしくは直流電流を流した時のコイルの発熱が t = 40 となる電流値の少ない方の値。(Ta=20 を基準とする。)

3 : ()内は、標準値とする。

3. 保存温度範囲 - 40 ~ +100
 使用温度範囲 - 40 ~ +100 (コイルの発熱を含む。)