

# MF1018S-4

FOR DIGITAL MOBILE TELEPHONE, Rx

MF1018S-4

## DESCRIPTION

This SAW filter for the transmitting RF circuit of digital mobile communication equipment operating at 940 MHz ~ 960 MHz.

## FEATURES

1. SMD package insures small size, lightweight.
2. Adjustment free.
3. Low insertion loss and high stop band attenuation.
4. Wide and sharp passband characteristics.
5. High stability and reliability.
6. Designed for reflow solderings.

## APPLICATION

- Mobile Cellular Telephone
- Portable Cellular Telephone
- Wireless equipment

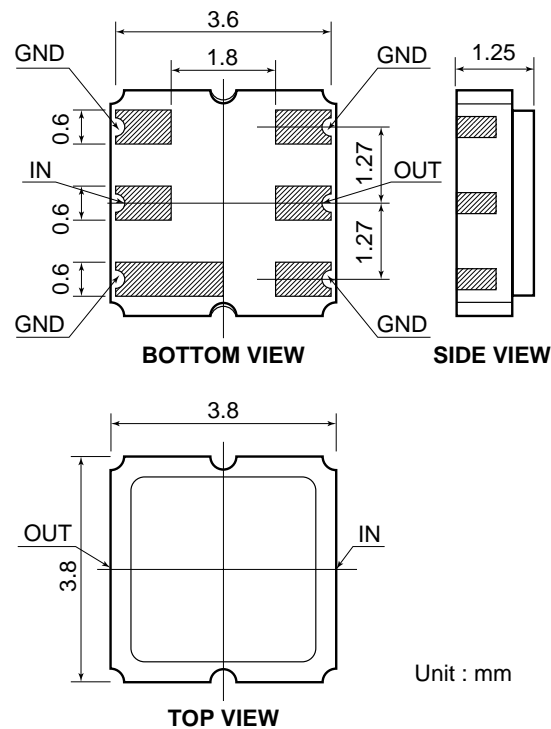
## MAXIMUM RATINGS

Rating	Value	Unit
Input Power	50	mW
Operating Temperature Range	-20 to 75	°C
Storage Temperature Range	-30 to 85	°C

## ELECTRICAL PERFORMANCE

Parameter	MF1018S-4			Units
	Min	Typ	Max	
PASSBAND FREQUENCY	940 – 960			MHz
PASSBAND CHARACTERISTICS				
Insertion Loss		3.0	4.0	dB
Ripple		0.6	1.5	dBp-p
VSWR		2.0	3.0	
STOPBAND ATTENUATION				
0 – 790 MHz	40	50		dB
790 – 900 MHz	30	42		dB
1000 – 1050 MHz	23	25		dB
1050 – 1600 MHz	30	45		dB

## PACKAGE OUTLINE DIMENSIONS



DIMENSIONS ARE IN MILLIMETERS  
±0.2 UNLESS OTHERWISE SPECIFIED

## MF1018S-4 TYPICAL CHARACTERISTICS

