

ショットキーバリアダイオード

SCHOTTKY BARRIER DIODE

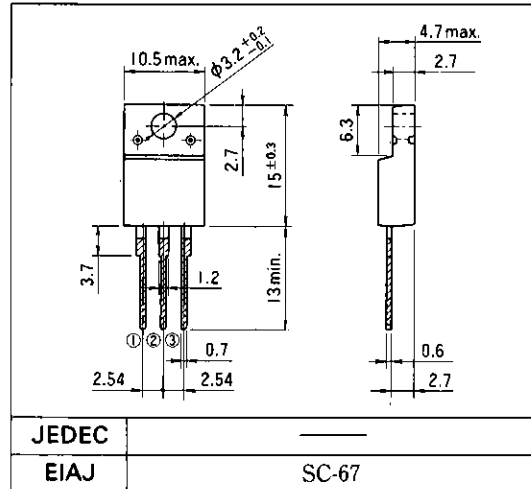
■特長：Features

- 取り付け面が絶縁されたフルモールドタイプ
Insulated package by fully molding.
- 低 V_F
Low V_F
- スイッチングスピードが非常に速い
Super high speed switching.
- プレーナー技術による高信頼性
High reliability by planer design.

■用途：Applications

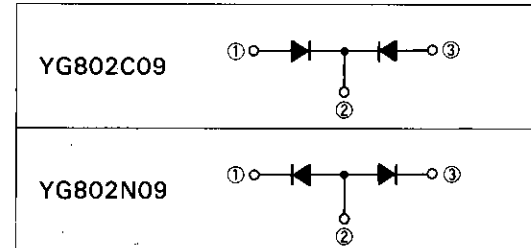
- 高速電力スイッチング
High speed power switching.

■外形寸法：Outline Drawings



■電極接続

Connection Diagram



■定格と特性：Maximum Ratings and Characteristics

●絶対最大定格：Absolute Maximum Ratings

| Items | Symbols | Conditions | Ratings | Units |
|--|-----------|--|------------|------------------|
| ピーク繰り返し逆電圧 Repetitive Peak Reverse Voltage | V_{RRM} | | 90 | V |
| ピーク非繰り返し逆電圧 Non-Repetitive Peak Reverse Voltage | V_{RSM} | $t_w = 500\text{ns}$, $\text{duty} = 1/40$ | 100 | V |
| 平均出力電流 Average Output Current | I_o | 方形波, $\text{duty} = 1/2$, $T_c = 87^\circ\text{C}$ Square wave | 10* | A |
| サージ電流 Surge Current | I_{FSM} | 正弦波 Sine wave 10ms | 80 | A |
| 接合温度 Operating Junction Temperature | T_j | | -40 ~ +125 | $^\circ\text{C}$ |
| 保存温度 Storage Temperature | T_{stg} | | -40 ~ +125 | $^\circ\text{C}$ |

* センタータップ平均出力電流

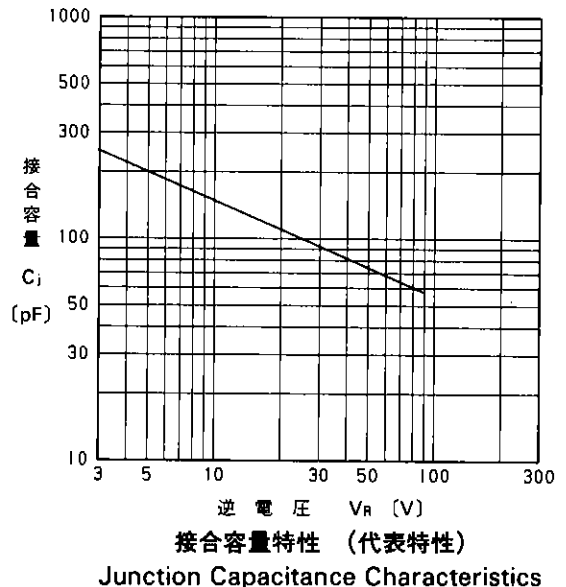
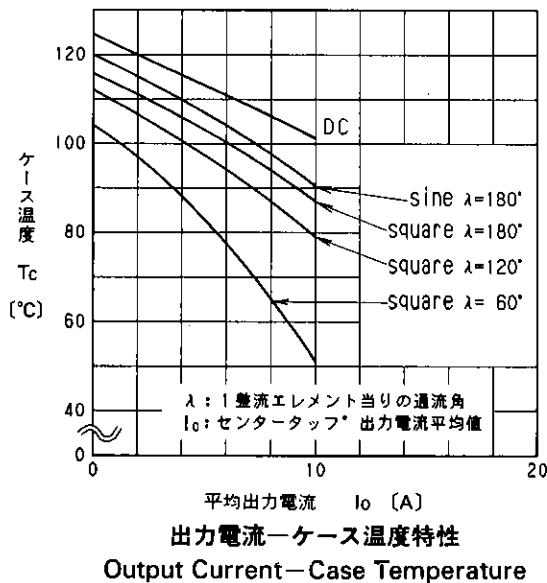
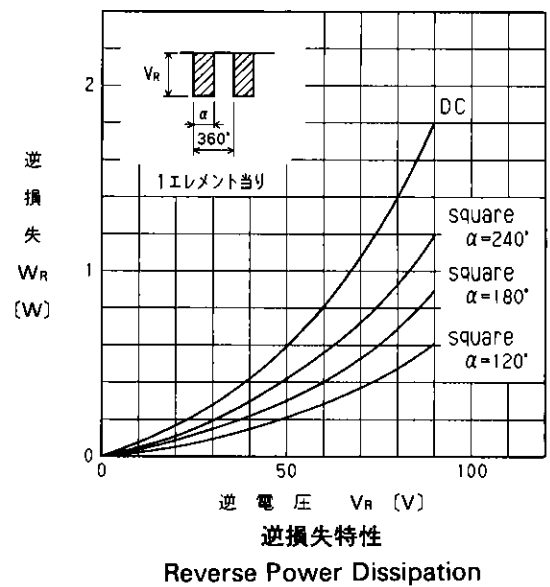
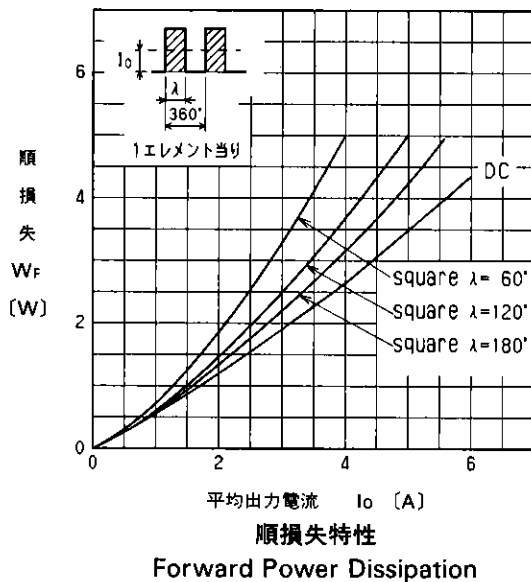
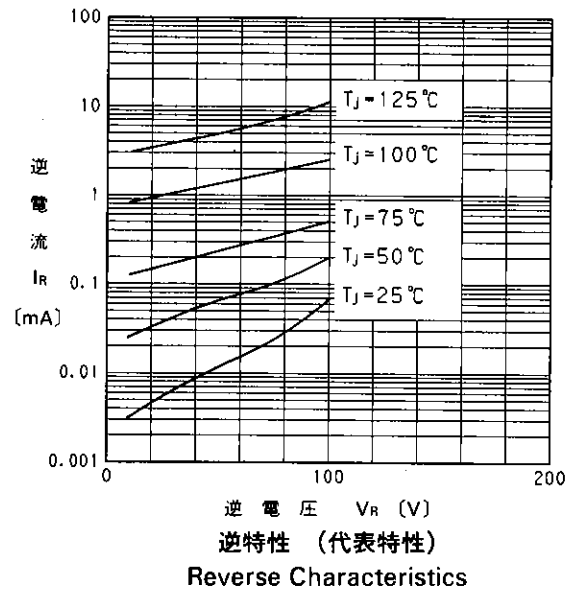
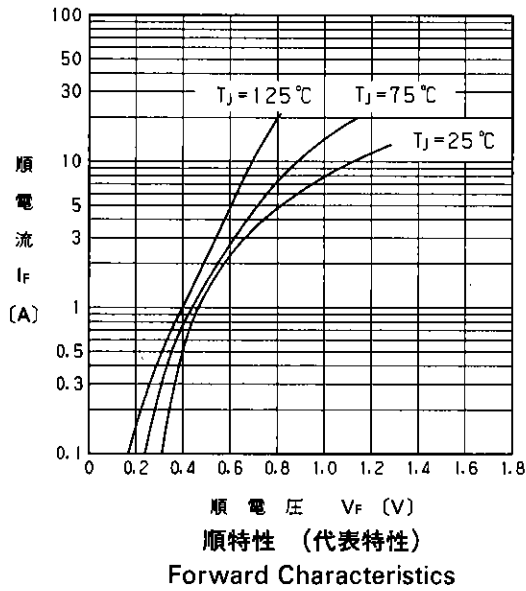
* average forward current of centertap full wave connection

●電気的特性(特に指定がない限り周囲温度 $T_a = 25^\circ\text{C}$ とする)

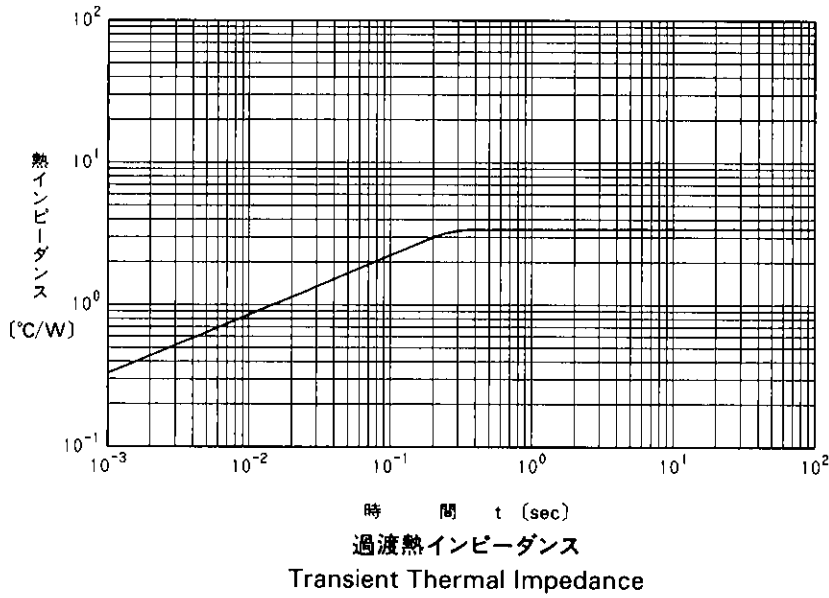
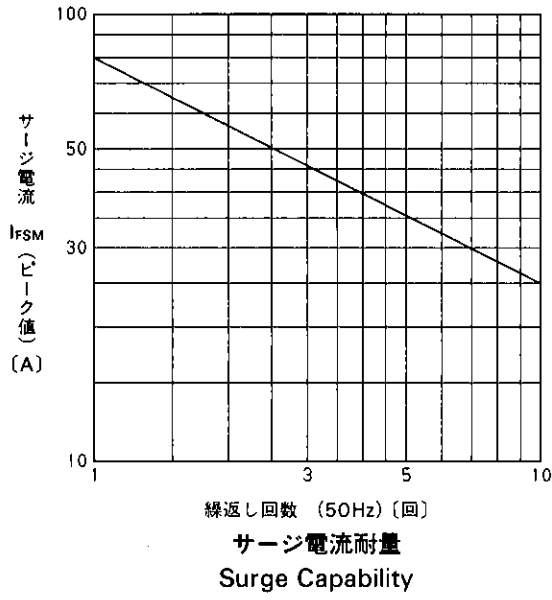
Electrical Characteristics ($T_a = 25^\circ\text{C}$ Unless otherwise specified)

| Items | Symbols | Conditions | Max. | Units |
|-----------------------------|---------------|-----------------------------|------|--------------------|
| 順電圧 Forward Voltage Drop | V_{FM} | $I_{FM} = 4\text{A}$ | 0.9 | V |
| 逆電流 Reverse Current | I_{RRM} | $V_R = V_{RRM}$ | 5 | mA |
| 熱抵抗 Thermal Resistance | $R_{th(j-c)}$ | 接合・ケース間 Junction to case | 3.5 | $^\circ\text{C/W}$ |

■特性曲線：Characteristics



A



For more information, contact:

Collmer Semiconductor, Inc.

P.O. Box 702708

Dallas, TX 75370

972-233-1589

972-233-0481 Fax

<http://www.collmer.com>