

# DATA SHEET

## **TDA8566Q**

**2 × 25 W BTL stereo car radio  
power amplifier with differential  
inputs and diagnostic outputs**

Product specification  
Supersedes data of 1996 Apr 11  
File under Integrated Circuits, IC01

1998 Sep 23

## 2 × 25 W BTL stereo car radio power amplifier with differential inputs and diagnostic outputs

### TDA8566Q

#### FEATURES

- Differential inputs
- Very high Common Mode Rejection Ratio (CMRR)
- High common mode input signal handling
- Requires very few external components
- High output power
- 4 Ω and 2 Ω load driving capability
- Low offset voltage at output
- Fixed gain
- Diagnostic facility (distortion, short-circuit and temperature pre-warning)
- Good ripple rejection
- Mode select switch (operating, mute and standby)
- Load dump protection
- Short-circuit proof to ground, to  $V_P$  and across the load
- Low power dissipation in any short-circuit condition

- Thermally protected
- Reverse polarity safe
- Protected against electrostatic discharge
- No switch-on/switch-off plop
- Flexible leads
- Low thermal resistance.

#### GENERAL DESCRIPTION

The TDA8566Q is an integrated class-B output amplifier contained in a 17-lead single-in-line (SIL; bent to DIL) plastic power package. The device contains two amplifiers in a Bridge-Tied Load configuration (BTL). The output power is 2 × 25 W in a 4 Ω load or 2 × 40 W in a 2 Ω load. It has a differential input stage and two diagnostic outputs. The device is primarily developed for car radio applications.

#### QUICK REFERENCE DATA

SYMBOL	PARAMETER	CONDITIONS	MIN.	TYP.	MAX.	UNIT
$V_P$	operating supply voltage		6	14.4	18	V
$I_{ORM}$	repetitive peak output current		–	–	7.5	A
$I_{q(tot)}$	total quiescent current		–	115	–	mA
$I_{stb}$	stand-by current		–	0.1	100	μA
$I_{sw}$	switch-on current		–	–	40	μA
$Z_i$	input impedance		100	120	–	kΩ
$P_{out}$	output power	$R_L = 4 \Omega$ : THD = 10%	–	25	–	W
		$R_L = 2 \Omega$ : THD = 10%	–	40	–	W
SVRR	supply voltage ripple rejection	$R_s = 0 \Omega$	–	60	–	dB
$\alpha_{cs}$	channel separation	$R_s = 10 \text{ k}\Omega$	–	50	–	dB
CMRR	common mode rejection ratio		–	75	–	dB
$G_v$	closed loop voltage gain		25	26	27	dB
$V_{no}$	noise output voltage	$R_s = 0 \Omega$	–	–	120	μV
$V_{os}$	DC output offset voltage		–	–	100	mV

#### ORDERING INFORMATION

TYPE NUMBER	PACKAGE		
	NAME	DESCRIPTION	VERSION
TDA8566Q	DBS17P	plastic DIL-bent-SIL power package; 17 leads (lead length 12 mm)	SOT243-1

**2 × 25 W BTL stereo car radio power amplifier  
with differential inputs and diagnostic outputs**

**TDA8566Q**

**BLOCK DIAGRAM**

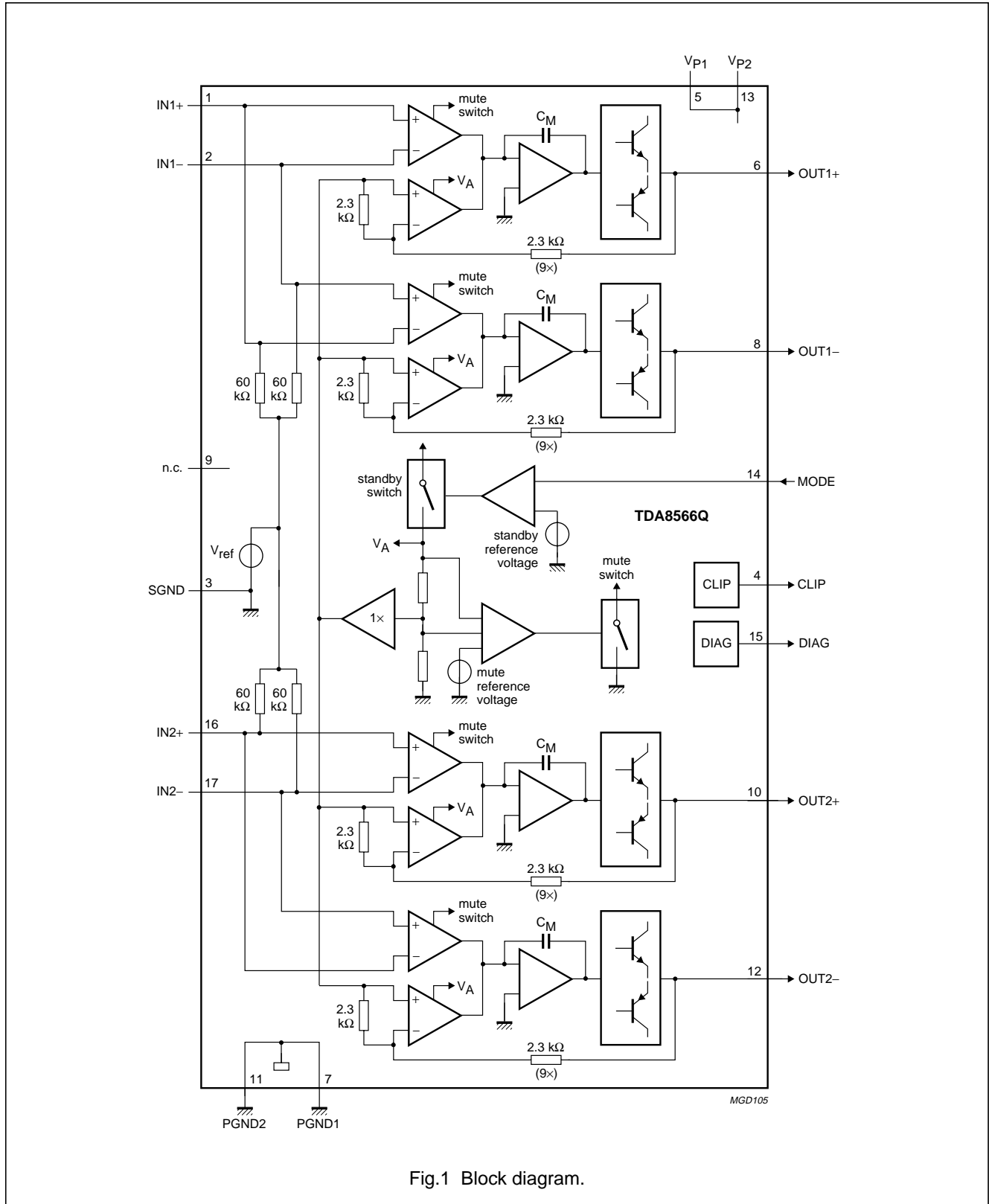


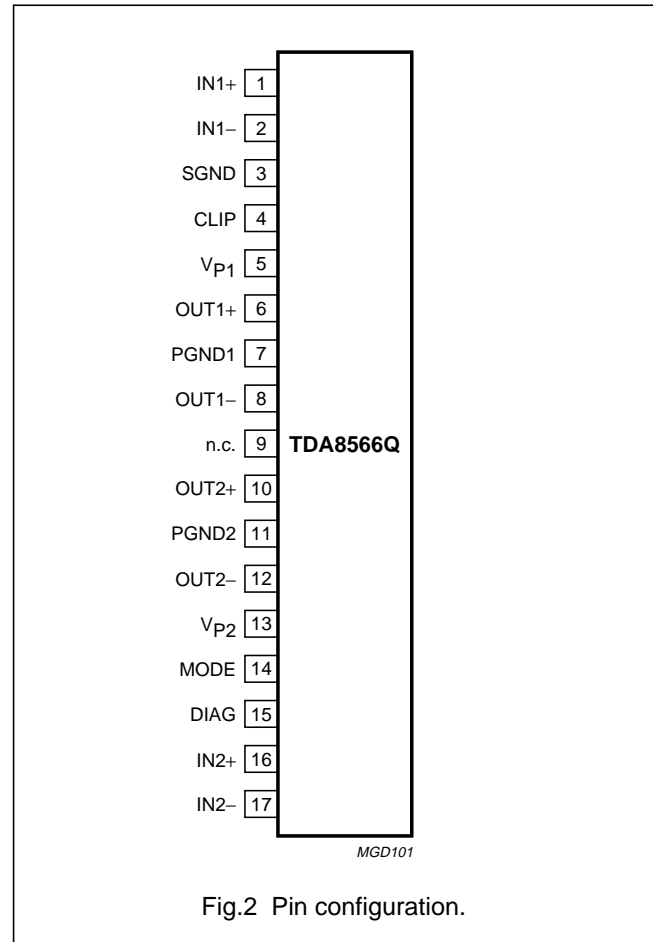
Fig.1 Block diagram.

## 2 × 25 W BTL stereo car radio power amplifier with differential inputs and diagnostic outputs

TDA8566Q

### PINNING

SYMBOL	PIN	DESCRIPTION
IN1+	1	channel 1 input positive
IN1-	2	channel 1 input negative
SGND	3	small signal ground
CLIP	4	clip-detection
V <sub>P1</sub>	5	supply voltage 1
OUT1+	6	channel 1 speaker output positive
PGND1	7	channel 1 negative power supply (ground)
OUT1-	8	channel 1 speaker output negative
n.c.	9	not connected
OUT2+	10	channel 2 speaker output positive
PGND2	11	channel 2 negative power supply (ground)
OUT2-	12	channel 2 speaker output negative
V <sub>P2</sub>	13	supply voltage 2
MODE	14	mode select switch (stand-by/mute/operating)
DIAG	15	short-circuit and temperature pre-warning diagnostic
IN2+	16	channel 2 input positive
IN2-	17	channel 2 input negative



### FUNCTIONAL DESCRIPTION

The TDA8566Q contains two identical amplifiers and can be used for BTL applications. The gain of each amplifier is fixed at 26 dB. Special features of this device are:

1. Mode select switch
2. Clip detection
3. Short-circuit diagnostic
4. Temperature pre-warning
5. Open-collector outputs
6. Differential inputs.

#### Mode select switch (pin 14)

- Standby: low supply current (< 100  $\mu$ A)
- Mute: input signal suppressed
- Operating: normal on condition.

Since this pin has a very low input current (< 40  $\mu$ A), a low cost supply switch can be applied. To avoid switch-on plops, it is advisable to keep the amplifier in the mute mode for a period of  $\geq 150$  ms (charging the input capacitors at pins 1, 2, 16 and 17). This can be realized by microcontroller control or by an external timing circuit (see Fig.7).

#### Clip detection (pin 4)

When clipping occurs at one or more output stages, the dynamic distortion detector becomes active and pin 4 goes low. This information can be used to drive a sound processor or DC volume control to attenuate the input signal and so limit the level of distortion. The output level of pin 4 is independent of the number of channels that are being clipped. The clip detection circuit is disabled in a short-circuit condition, so if a fault condition occurs at the outputs, pin 4 will remain at a high level. The clip detection waveforms are illustrated in Fig.3.

# 2 × 25 W BTL stereo car radio power amplifier with differential inputs and diagnostic outputs

## TDA8566Q

### Short-circuit diagnostic (pin 15)

When a short-circuit occurs at one or more outputs to ground or to the supply voltage, the output stages are switched off until the short-circuit is removed and the device is switched on again (with a delay of approximately 20 ms after the removal of the short-circuit). During this short-circuit condition, pin 15 is continuously low.

When a short-circuit occurs across the load of one or both channels, the output stages are switched off for approximately 20 ms. After approximately 50 μs the load condition is again checked to see if the short-circuit is still present. Due to this duty cycle of 50 μs/20 ms the average current consumption during this short-circuit condition is very low (approximately 40 mA). During this short-circuit condition, pin 15 is low for 20 ms and high for 50 μs (see Fig.4). The power dissipation in any short-circuit condition is very low.

### Temperature pre-warning (pin 15)

When the junction temperature ( $T_{vj}$ ) reaches 145 °C, pin 15 will become continuously low.

### Open-collector outputs

Pins 4 and 15 are open-collector outputs, therefore more devices can be tied together. Pins 4 and 15 can also be tied together. An external pull-up resistor is required.

### Differential inputs

The input stage is a high-impedance fully differential balanced input stage that is also capable of operating in a single-ended mode with one of the inputs capacitively coupled to an audio ground. It should be noted that if a source resistance is added (input voltage dividers) the CMRR degrades to lower values.

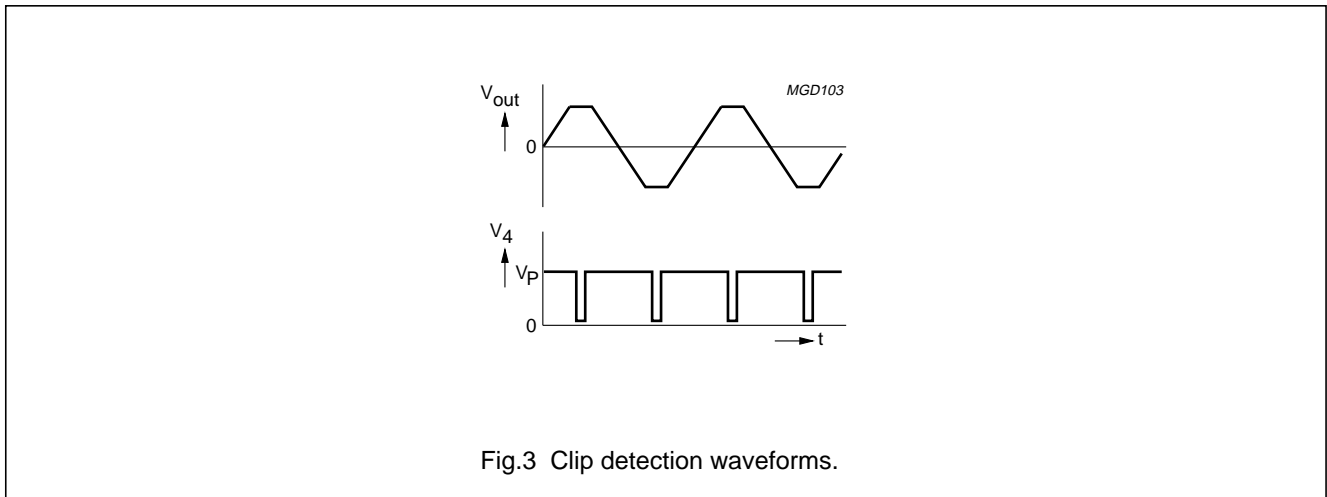


Fig.3 Clip detection waveforms.

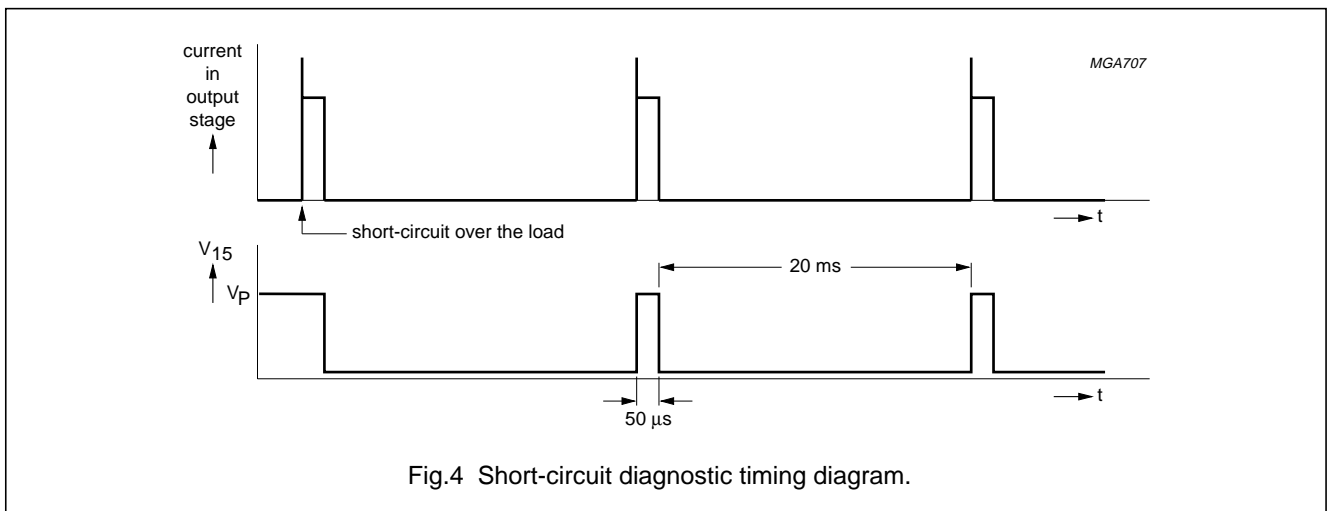


Fig.4 Short-circuit diagnostic timing diagram.

## 2 × 25 W BTL stereo car radio power amplifier with differential inputs and diagnostic outputs

TDA8566Q

### LIMITING VALUES

In accordance with the Absolute Maximum Rating System (IEC 134).

SYMBOL	PARAMETER	CONDITIONS	MIN.	MAX.	UNIT
V <sub>P</sub>	supply voltage	operating	–	18	V
		non-operating	–	30	V
		during 50 ms; load dump protection $t_{\text{rise}} \geq 2.5$ ms	–	45	V
I <sub>OSM</sub>	non-repetitive peak output current		–	10	A
I <sub>ORM</sub>	repetitive peak output current		–	7.5	A
T <sub>stg</sub>	storage temperature		–55	+150	°C
T <sub>vj</sub>	virtual junction temperature		–	+150	°C
T <sub>amb</sub>	operating ambient temperature		–40	+85	°C
V <sub>psc</sub>	short-circuit safe voltage		–	18	V
V <sub>pr</sub>	reverse polarity		–	6.0	V
P <sub>tot</sub>	total power dissipation		–	60	W

### QUALITY SPECIFICATION

Quality specification in accordance with *UZW-FQ-611-E*, if this type is used as an audio amplifier. The number of the quality specification can be found in the “*Quality Reference Handbook*”. The handbook can be ordered using the code 9397 750 00192.

### THERMAL CHARACTERISTICS

Thermal characteristics in accordance with (IEC 747-1).

SYMBOL	PARAMETER	VALUE	UNIT
R <sub>th j-c</sub>	thermal resistance from junction to case	1.3	K/W
R <sub>th j-a</sub>	thermal resistance from junction to ambient in free air	40	K/W

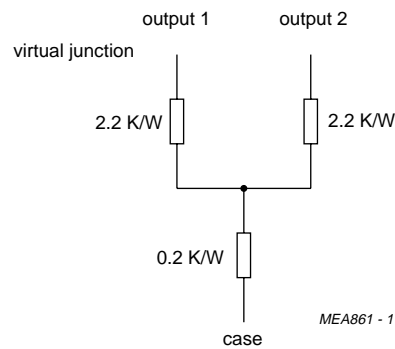


Fig.5 Equivalent thermal resistance network.

## 2 × 25 W BTL stereo car radio power amplifier with differential inputs and diagnostic outputs

TDA8566Q

### DC CHARACTERISTICS

$V_P = 14.4$  V;  $T_{amb} = 25$  °C; measured in test circuit of Fig.6; unless otherwise specified.

SYMBOL	PARAMETER	CONDITIONS	MIN.	TYP.	MAX.	UNIT
<b>Supply voltage</b>						
$V_P$	supply voltage	note 1	6	14.4	18	V
$I_q$	quiescent current	$R_L = \infty$	–	115	180	mA
<b>Operating condition</b>						
$V_{ms(op)}$	mode select switch level		8.5	–	$V_P$	V
$I_{14}$	mode select switch current	$V_{14} = 14.4$ V	–	15	40	μA
$V_o$	output voltage	note 2	–	7.0	–	V
$V_{os}$	output offset voltage		–	–	100	mV
<b>Mute condition</b>						
$V_{ms(mute)}$	mode select switch level		3.3	–	6.4	V
$V_o$	output voltage	note 2	–	7.0	–	V
$V_{os}$	output offset voltage		–	–	100	mV
<b>Standby condition</b>						
$V_{ms(stb)}$	mode select switch level		0	–	2	V
$I_{stb}$	standby current		–	0.1	100	μA
<b>Diagnostic</b>						
$V_{15}$	diagnostic output voltage	during any fault condition	–	–	0.6	V
$T_{vj}$	temperature pre-warning	$V_{15} = 0.6$ V	–	145	–	°C

### Notes

- The circuit is DC adjusted at  $V_P = 6$  to 18 V and AC operating at  $V_P = 8.5$  to 18 V.
- At  $V_P = 18$  to 30 V the DC output voltage  $\leq 0.5V_P$ .

### AC CHARACTERISTICS

$V_P = 14.4$  V;  $T_{amb} = 25$  °C;  $R_L = 4$  Ω;  $f_i = 1$  kHz; measured in test circuit of Fig.6; unless otherwise specified.

SYMBOL	PARAMETER	CONDITIONS	MIN.	TYP.	MAX.	UNIT
$P_{out}$	output power	THD = 0.5%	16	19	–	W
		THD = 10%	21	25	–	W
		THD = 30%	28	35	–	W
THD	total harmonic distortion	$P_{out} = 1$ W	–	0.05	–	%
$P_{out}$	output power	$V_P = 13.5$ V; THD = 0.5%	–	14	–	W
		$V_P = 13.5$ V; THD = 10%	–	22	–	W
B	power bandwidth	THD = 0.5%; $P_{out} = -1$ dB with respect to 16 W	–	20 to 20000	–	Hz
$f_l$	low frequency roll off	-1 dB, note 1	–	25	–	Hz
$f_h$	high frequency roll off	-1dB	20	–	–	kHz
$G_v$	closed loop voltage gain		25	26	27	dB

## 2 × 25 W BTL stereo car radio power amplifier with differential inputs and diagnostic outputs

TDA8566Q

SYMBOL	PARAMETER	CONDITIONS	MIN.	TYP.	MAX.	UNIT
SVRR	supply voltage ripple rejection	on; note 2	50	–	–	dB
		mute; note 2	50	–	–	dB
		standby; note 2	80	–	–	dB
Z <sub>i</sub>	input impedance	differential	100	120	150	kΩ
		single-ended	50	60	75	kΩ
ΔZ <sub>i</sub>	input impedance mismatch		–	2	–	%
V <sub>no</sub>	noise output voltage	on; B = 20 Hz to 20 kHz; R <sub>s</sub> = 0 Ω	–	85	120	μV
		on; B = 20 Hz to 20 kHz; R <sub>s</sub> = 10 kΩ	–	100	–	μV
		mute; B = 20 Hz to 20 kHz; independent of R <sub>s</sub>	–	60	–	μV
α <sub>cs</sub>	channel separation	P <sub>out</sub> = 16 W; R <sub>s</sub> = 10 kΩ	45	–	–	dB
ΔG <sub>v</sub>	channel unbalance		–	–	1	dB
V <sub>o</sub>	output signal voltage in mute	V <sub>i</sub> = V <sub>i(max)</sub> = 1 V (RMS)	–	–	2	mV
THD	total harmonic distortion	note 3; V <sub>4</sub> = 0.6 V	–	8	–	%
CMRR	common mode rejection ratio	R <sub>s</sub> = 0 Ω; note 4	60	75	–	dB
		R <sub>s</sub> = 45 kΩ, note 5	40	–	–	dB
P <sub>out</sub>	output power	THD = 0.5%; R <sub>L</sub> = 2 Ω	–	30	–	W
		THD = 10%; R <sub>L</sub> = 2 Ω	–	40	–	W
		THD = 30%; R <sub>L</sub> = 2 Ω	–	55	–	W
		V <sub>p</sub> = 13.5 V; THD = 0.5%; R <sub>L</sub> = 2 Ω	–	25	–	W
		V <sub>p</sub> = 13.5 V; THD = 10%; R <sub>L</sub> = 2 Ω	–	35	–	W
THD	total harmonic distortion	P <sub>out</sub> = 1 W; R <sub>L</sub> = 2 Ω	–	0.1	–	%

### Notes

1. Frequency response externally fixed.
2.  $V_{\text{ripple}} = V_{\text{ripple(max)}} = 2 \text{ V (p-p)}$ ,  $R_s = 0 \Omega$ .
3. Dynamic Distortion Detector (DDD) active, pin 4 is low.
4. Common mode rejection ratio measured at the output (over R<sub>L</sub>) with both inputs tied together,  $V_{\text{common}} \leq 3.5 \text{ V (RMS)}$ ,  $f = 100 \text{ Hz to } 10 \text{ kHz}$ ,  $R_s = 0 \Omega$ .
5. Common mode rejection ratio measured at the output (over R<sub>L</sub>) with both inputs tied together,  $V_{\text{common}} \leq 3.5 \text{ V (RMS)}$ ,  $f = 1 \text{ kHz}$ ,  $R_s = 45 \text{ k}\Omega$ . The mismatch of the input coupling capacitors is excluded.



**2 × 25 W BTL stereo car radio power amplifier with differential inputs and diagnostic outputs**

**TDA8566Q**

**TEST AND APPLICATION INFORMATION**

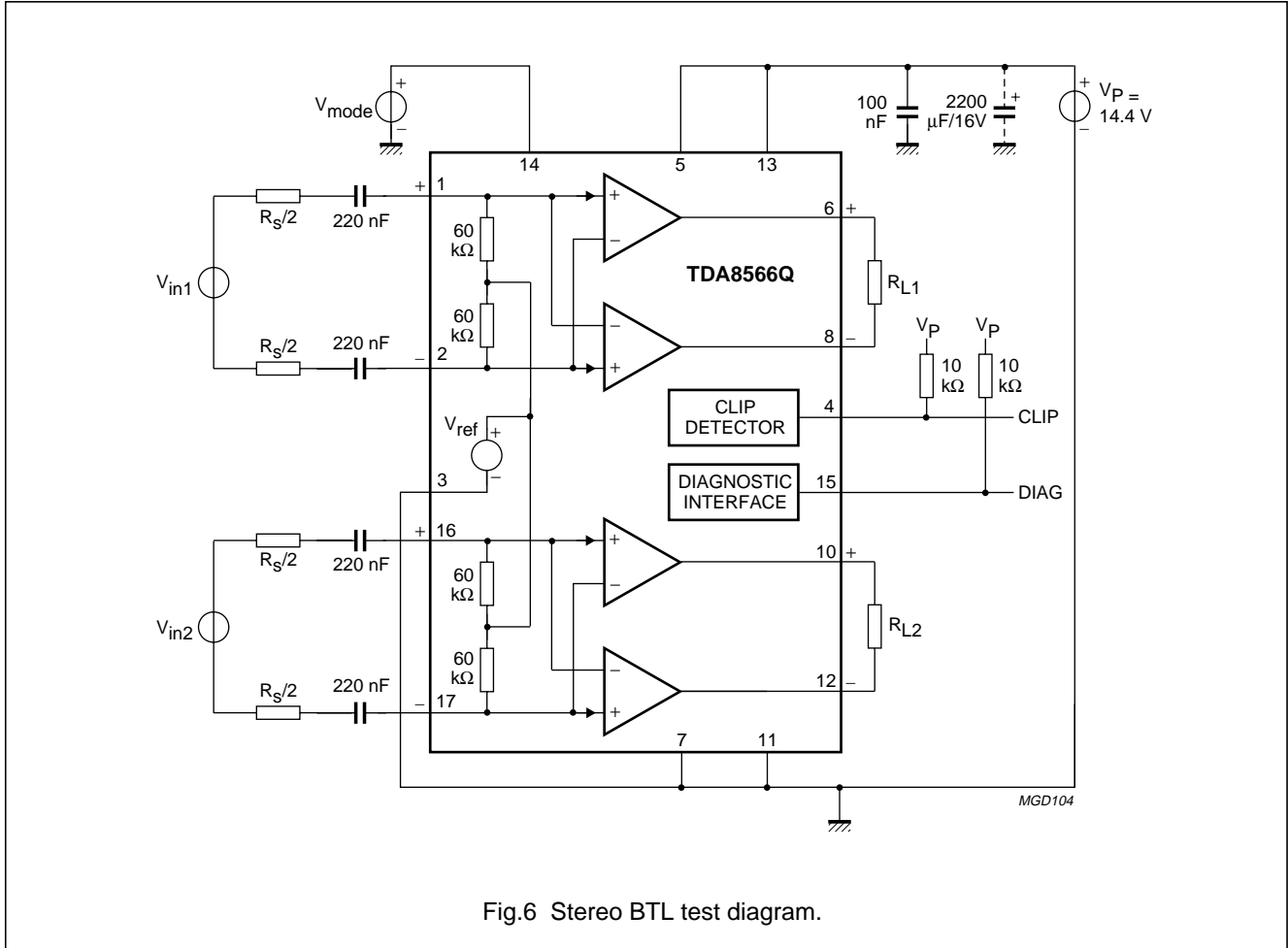


Fig.6 Stereo BTL test diagram.

**Application notes**

**DIAGNOSTIC OUTPUT**

Special care must be taken in the PCB layout to separate pin 4 from pins 1, 2, 16 and 17 to minimize the crosstalk between the CLIP output and the inputs.

**MODE SELECT SWITCH**

To avoid switch on plops, it is advisable to keep the amplifier in the mute mode during  $\geq 150$  ms (charging of the input capacitors at pins 1, 2, 16 and 17). The circuit in Fig.7 slowly ramps-up the voltage at the mode select switch pin when switching on and results in fast muting when switching off.

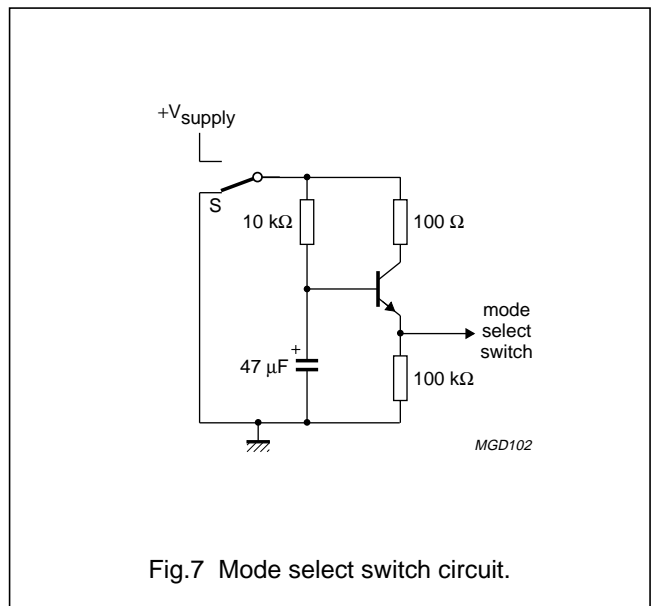


Fig.7 Mode select switch circuit.

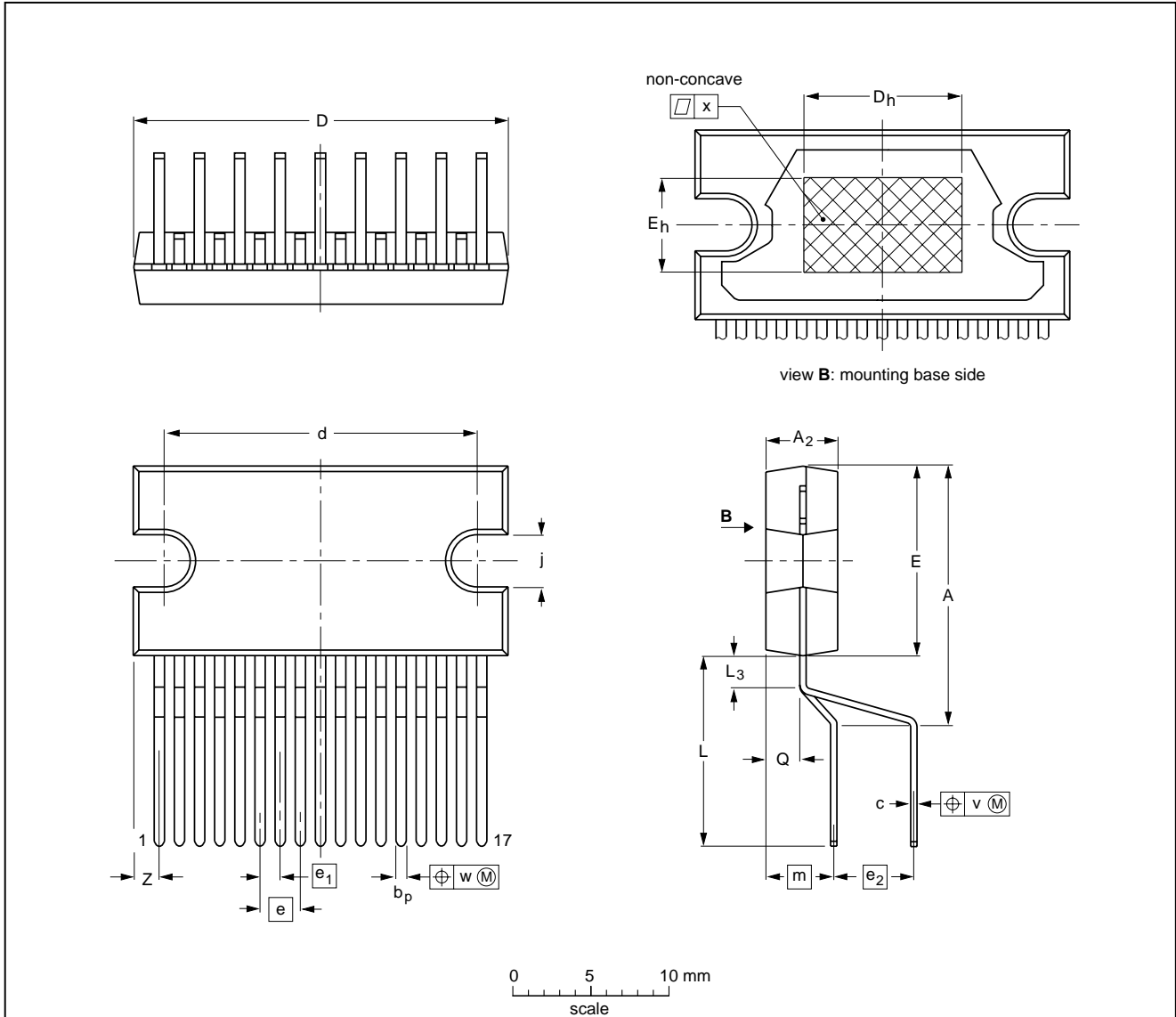
2 × 25 W BTL stereo car radio power amplifier  
with differential inputs and diagnostic outputs

TDA8566Q

PACKAGE OUTLINE

DBS17P: plastic DIL-bent-SIL power package; 17 leads (lead length 12 mm)

SOT243-1



DIMENSIONS (mm are the original dimensions)

UNIT	A	A <sub>2</sub>	b <sub>p</sub>	c	D <sup>(1)</sup>	d	D <sub>h</sub>	E <sup>(1)</sup>	e	e <sub>1</sub>	e <sub>2</sub>	E <sub>h</sub>	j	L	L <sub>3</sub>	m	Q	v	w	x	Z <sup>(1)</sup>
mm	17.0 15.5	4.6 4.2	0.75 0.60	0.48 0.38	24.0 23.6	20.0 19.6	10	12.2 11.8	2.54	1.27	5.08	6	3.4 3.1	12.4 11.0	2.4 1.6	4.3	2.1 1.8	0.8	0.4	0.03	2.00 1.45

Note

1. Plastic or metal protrusions of 0.25 mm maximum per side are not included.

OUTLINE VERSION	REFERENCES				EUROPEAN PROJECTION	ISSUE DATE
	IEC	JEDEC	EIAJ			
SOT243-1						95-03-11 97-12-16

## 2 × 25 W BTL stereo car radio power amplifier with differential inputs and diagnostic outputs

TDA8566Q

### SOLDERING

#### Introduction

There is no soldering method that is ideal for all IC packages. Wave soldering is often preferred when through-hole and surface mounted components are mixed on one printed-circuit board. However, wave soldering is not always suitable for surface mounted ICs, or for printed-circuits with high population densities. In these situations reflow soldering is often used.

This text gives a very brief insight to a complex technology. A more in-depth account of soldering ICs can be found in our *"Data Handbook IC26; Integrated Circuit Packages"* (order code 9398 652 90011).

#### Soldering by dipping or by wave

The maximum permissible temperature of the solder is 260 °C; solder at this temperature must not be in contact with the joint for more than 5 seconds. The total contact

time of successive solder waves must not exceed 5 seconds.

The device may be mounted up to the seating plane, but the temperature of the plastic body must not exceed the specified maximum storage temperature ( $T_{stg\ max}$ ). If the printed-circuit board has been pre-heated, forced cooling may be necessary immediately after soldering to keep the temperature within the permissible limit.

#### Repairing soldered joints

Apply a low voltage soldering iron (less than 24 V) to the lead(s) of the package, below the seating plane or not more than 2 mm above it. If the temperature of the soldering iron bit is less than 300 °C it may remain in contact for up to 10 seconds. If the bit temperature is between 300 and 400 °C, contact may be up to 5 seconds.

### DEFINITIONS

Data sheet status	
Objective specification	This data sheet contains target or goal specifications for product development.
Preliminary specification	This data sheet contains preliminary data; supplementary data may be published later.
Product specification	This data sheet contains final product specifications.
Limiting values	
Limiting values given are in accordance with the Absolute Maximum Rating System (IEC 134). Stress above one or more of the limiting values may cause permanent damage to the device. These are stress ratings only and operation of the device at these or at any other conditions above those given in the Characteristics sections of the specification is not implied. Exposure to limiting values for extended periods may affect device reliability.	
Application information	
Where application information is given, it is advisory and does not form part of the specification.	

### LIFE SUPPORT APPLICATIONS

These products are not designed for use in life support appliances, devices, or systems where malfunction of these products can reasonably be expected to result in personal injury. Philips customers using or selling these products for use in such applications do so at their own risk and agree to fully indemnify Philips for any damages resulting from such improper use or sale.

# Philips Semiconductors – a worldwide company

**Argentina:** see South America

**Australia:** 34 Waterloo Road, NORTH RYDE, NSW 2113, Tel. +61 2 9805 4455, Fax. +61 2 9805 4466

**Austria:** Computerstr. 6, A-1101 WIEN, P.O. Box 213, Tel. +43 160 1010, Fax. +43 160 101 1210

**Belarus:** Hotel Minsk Business Center, Bld. 3, r. 1211, Volodarski Str. 6, 220050 MINSK, Tel. +375 172 200 733, Fax. +375 172 200 773

**Belgium:** see The Netherlands

**Brazil:** see South America

**Bulgaria:** Philips Bulgaria Ltd., Energoproject, 15th floor, 51 James Bourchier Blvd., 1407 SOFIA, Tel. +359 2 689 211, Fax. +359 2 689 102

**Canada:** PHILIPS SEMICONDUCTORS/COMPONENTS, Tel. +1 800 234 7381

**China/Hong Kong:** 501 Hong Kong Industrial Technology Centre, 72 Tat Chee Avenue, Kowloon Tong, HONG KONG, Tel. +852 2319 7888, Fax. +852 2319 7700

**Colombia:** see South America

**Czech Republic:** see Austria

**Denmark:** Prags Boulevard 80, PB 1919, DK-2300 COPENHAGEN S, Tel. +45 32 88 2636, Fax. +45 31 57 0044

**Finland:** Sinikalliontie 3, FIN-02630 ESPOO, Tel. +358 9 615800, Fax. +358 9 61580920

**France:** 51 Rue Carnot, BP317, 92156 SURESNES Cedex, Tel. +33 1 40 99 6161, Fax. +33 1 40 99 6427

**Germany:** Hammerbrookstraße 69, D-20097 HAMBURG, Tel. +49 40 23 53 60, Fax. +49 40 23 536 300

**Greece:** No. 15, 25th March Street, GR 17778 TAVROS/ATHENS, Tel. +30 1 4894 339/239, Fax. +30 1 4814 240

**Hungary:** see Austria

**India:** Philips INDIA Ltd, Band Box Building, 2nd floor, 254-D, Dr. Annie Besant Road, Worli, MUMBAI 400 025, Tel. +91 22 493 8541, Fax. +91 22 493 0966

**Indonesia:** PT Philips Development Corporation, Semiconductors Division, Gedung Philips, Jl. Buncit Raya Kav.99-100, JAKARTA 12510, Tel. +62 21 794 0040 ext. 2501, Fax. +62 21 794 0080

**Ireland:** Newstead, Clonskeagh, DUBLIN 14, Tel. +353 1 7640 000, Fax. +353 1 7640 200

**Israel:** RAPAC Electronics, 7 Kehilat Saloniki St, PO Box 18053, TEL AVIV 61180, Tel. +972 3 645 0444, Fax. +972 3 649 1007

**Italy:** PHILIPS SEMICONDUCTORS, Piazza IV Novembre 3, 20124 MILANO, Tel. +39 2 6752 2531, Fax. +39 2 6752 2557

**Japan:** Philips Bldg 13-37, Kohnan 2-chome, Minato-ku, TOKYO 108-8507, Tel. +81 3 3740 5130, Fax. +81 3 3740 5077

**Korea:** Philips House, 260-199 Itaewon-dong, Yongsan-ku, SEOUL, Tel. +82 2 709 1412, Fax. +82 2 709 1415

**Malaysia:** No. 76 Jalan Universiti, 46200 PETALING JAYA, SELANGOR, Tel. +60 3 750 5214, Fax. +60 3 757 4880

**Mexico:** 5900 Gateway East, Suite 200, EL PASO, TEXAS 79905, Tel. +9-5 800 234 7381

**Middle East:** see Italy

**Netherlands:** Postbus 90050, 5600 PB EINDHOVEN, Bldg. VB, Tel. +31 40 27 82785, Fax. +31 40 27 88399

**New Zealand:** 2 Wagener Place, C.P.O. Box 1041, AUCKLAND, Tel. +64 9 849 4160, Fax. +64 9 849 7811

**Norway:** Box 1, Manglerud 0612, OSLO, Tel. +47 22 74 8000, Fax. +47 22 74 8341

**Pakistan:** see Singapore

**Philippines:** Philips Semiconductors Philippines Inc., 106 Valero St. Salcedo Village, P.O. Box 2108 MCC, MAKATI, Metro MANILA, Tel. +63 2 816 6380, Fax. +63 2 817 3474

**Poland:** Ul. Lukiska 10, PL 04-123 WARSZAWA, Tel. +48 22 612 2831, Fax. +48 22 612 2327

**Portugal:** see Spain

**Romania:** see Italy

**Russia:** Philips Russia, Ul. Usatcheva 35A, 119048 MOSCOW, Tel. +7 095 755 6918, Fax. +7 095 755 6919

**Singapore:** Lorong 1, Toa Payoh, SINGAPORE 319762, Tel. +65 350 2538, Fax. +65 251 6500

**Slovakia:** see Austria

**Slovenia:** see Italy

**South Africa:** S.A. PHILIPS Pty Ltd., 195-215 Main Road Martindale, 2092 JOHANNESBURG, P.O. Box 7430 Johannesburg 2000, Tel. +27 11 470 5911, Fax. +27 11 470 5494

**South America:** Al. Vicente Pinzon, 173, 6th floor, 04547-130 SÃO PAULO, SP, Brazil, Tel. +55 11 821 2333, Fax. +55 11 821 2382

**Spain:** Balmes 22, 08007 BARCELONA, Tel. +34 93 301 6312, Fax. +34 93 301 4107

**Sweden:** Kottbygatan 7, Akalla, S-16485 STOCKHOLM, Tel. +46 8 5985 2000, Fax. +46 8 5985 2745

**Switzerland:** Allmendstrasse 140, CH-8027 ZÜRICH, Tel. +41 1 488 2741 Fax. +41 1 488 3263

**Taiwan:** Philips Semiconductors, 6F, No. 96, Chien Kuo N. Rd., Sec. 1, TAIPEI, Taiwan Tel. +886 2 2134 2865, Fax. +886 2 2134 2874

**Thailand:** PHILIPS ELECTRONICS (THAILAND) Ltd., 209/2 Sanpavuth-Bangna Road Prakanong, BANGKOK 10260, Tel. +66 2 745 4090, Fax. +66 2 398 0793

**Turkey:** Talatpasa Cad. No. 5, 80640 GÜLTEPE/ISTANBUL, Tel. +90 212 279 2770, Fax. +90 212 282 6707

**Ukraine:** PHILIPS UKRAINE, 4 Patrice Lumumba str., Building B, Floor 7, 252042 KIEV, Tel. +380 44 264 2776, Fax. +380 44 268 0461

**United Kingdom:** Philips Semiconductors Ltd., 276 Bath Road, Hayes, MIDDLESEX UB3 5BX, Tel. +44 181 730 5000, Fax. +44 181 754 8421

**United States:** 811 East Arques Avenue, SUNNYVALE, CA 94088-3409, Tel. +1 800 234 7381

**Uruguay:** see South America

**Vietnam:** see Singapore

**Yugoslavia:** PHILIPS, Trg N. Pasica 5/v, 11000 BEOGRAD, Tel. +381 11 625 344, Fax. +381 11 635 777

**For all other countries apply to:** Philips Semiconductors, International Marketing & Sales Communications, Building BE-p, P.O. Box 218, 5600 MD EINDHOVEN, The Netherlands, Fax. +31 40 27 24825

**Internet:** <http://www.semiconductors.philips.com>

© Philips Electronics N.V. 1998

SCA60

All rights are reserved. Reproduction in whole or in part is prohibited without the prior written consent of the copyright owner.

The information presented in this document does not form part of any quotation or contract, is believed to be accurate and reliable and may be changed without notice. No liability will be accepted by the publisher for any consequence of its use. Publication thereof does not convey nor imply any license under patent- or other industrial or intellectual property rights.

Printed in The Netherlands

545102/750/03/pp12

Date of release: 1998 Sep 23

Document order number: 9397 750 04335

*Let's make things better.*

**Philips  
Semiconductors**



**PHILIPS**